



**ELECTRONIC COPY**

802619399  
Report verification at igi.org

**DIAMOND REPORT**

May 21, 2026  
IGI Report Number **802619399**  
Description **NATURAL DIAMOND**  
Shape and Cutting Style **ROUND BRILLIANT**  
Measurements **7.02 - 7.08 X 4.44 MM**

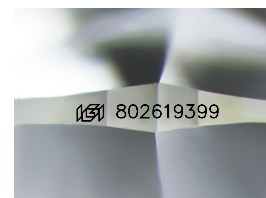
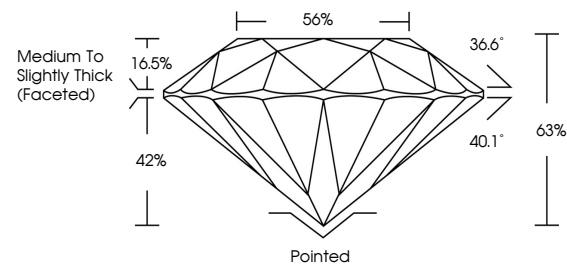
**GRADING RESULTS**

Carat Weight **1.40 CARAT**  
Color Grade **H**  
Clarity Grade **VS 1**  
Cut Grade **EXCELLENT**

**ADDITIONAL GRADING INFORMATION**

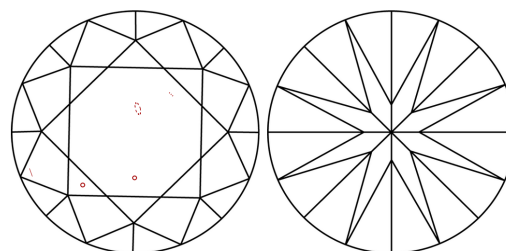
Polish **EXCELLENT**  
Symmetry **EXCELLENT**  
Fluorescence **NONE**  
Inscription(s) **802619399**

**PROPORTIONS**



Sample Image Used

**CLARITY CHARACTERISTICS**



**KEY TO SYMBOLS**

Red symbols indicate internal characteristics.  
Green symbols indicate external characteristics.

**COLOR**

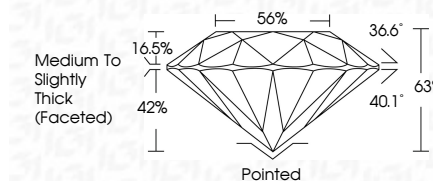
D - F	G - J	K - M	N - R	S - Z	FANCY
Colorless	Near Colorless	Slightly Tinted	Very Light Color	Light Color	

**CLARITY**

FL	IF	VVS <sup>1-2</sup>	VS <sup>1-2</sup>	SI <sup>1-2</sup>	I <sup>1-3</sup>
Flawless	Internally Flawless	Very Very Slightly Included	Very Slightly Included	Slightly Included	Included



May 21, 2026  
IGI Report Number **802619399**  
Description **NATURAL DIAMOND**  
Shape and Cutting Style **ROUND BRILLIANT**  
Measurements **7.02 - 7.08 X 4.44 MM**  
**GRADING RESULTS**  
Carat Weight **1.40 CARAT**  
Color Grade **H**  
Clarity Grade **VS 1**  
Cut Grade **EXCELLENT**



**ADDITIONAL GRADING INFORMATION**

Polish **EXCELLENT**  
Symmetry **EXCELLENT**  
Fluorescence **NONE**  
Inscription(s) **802619399**



**IGI**



May 21, 2026  
IGI Report No. 802619399  
**ROUND BRILLIANT**  
1.40 CARAT  
Color Grade **H**  
Clarity Grade **VS 1**  
Depth **63%**  
Table **56%**  
Girdle **Medium To Slightly Thick (Faceted)**  
Culet **Pointed**  
Polish **EXCELLENT**  
Symmetry **EXCELLENT**  
Fluorescence **NONE**  
Inscriptions(s) **802619399**