



ELECTRONIC COPY

801637705
Report verification at igi.org



June 11, 2026
IGI Report Number **801637705**
Description **NATURAL DIAMOND**
Shape and Cutting Style **EMERALD CUT**
Measurements **7.70 X 5.49 X 3.70 MM**
GRADING RESULTS
Carat Weight **1.55 CARAT**
Color Grade **I**
Clarity Grade **VVS 2**
Cut Grade **EXCELLENT**

DIAMOND REPORT

June 11, 2026
IGI Report Number **801637705**
Description **NATURAL DIAMOND**
Shape and Cutting Style **EMERALD CUT**
Measurements **7.70 X 5.49 X 3.70 MM**

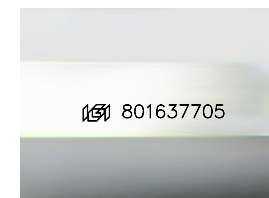
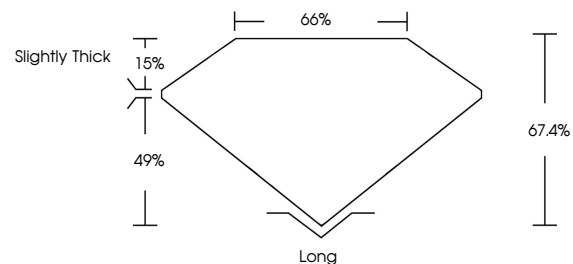
GRADING RESULTS

Carat Weight **1.55 CARAT**
Color Grade **I**
Clarity Grade **VVS 2**
Cut Grade **EXCELLENT**

ADDITIONAL GRADING INFORMATION

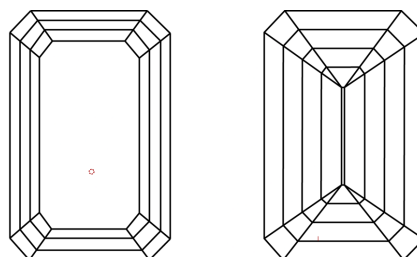
Polish **EXCELLENT**
Symmetry **EXCELLENT**
Fluorescence **NONE**
Inscription(s) **801637705**

PROPORTIONS



Sample Image Used

CLARITY CHARACTERISTICS



KEY TO SYMBOLS

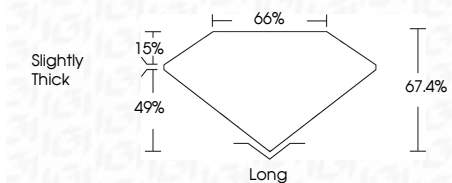
Red symbols indicate internal characteristics.
Green symbols indicate external characteristics.

COLOR

D - F	G - J	K - M	N - R	S - Z	FANCY
Colorless	Near Colorless	Slightly Tinted	Very Light Color	Light Color	

CLARITY

FL	IF	VVS 1-2	VS 1-2	SI 1-2	I 1-3
Flawless	Internally Flawless	Very Very Slightly Included	Very Slightly Included	Slightly Included	Included



ADDITIONAL GRADING INFORMATION

Polish **EXCELLENT**
Symmetry **EXCELLENT**
Fluorescence **NONE**
Inscription(s) **801637705**



IGI



June 11, 2026
IGI Report No 801637705
EMERALD CUT
7.70 X 5.49 X 3.70 MM
1.55 CARAT
I
VVS 2
EXCELLENT
67.4%
66%
Slightly Thick
Long
EXCELLENT
EXCELLENT
NONE
801637705