



ELECTRONIC COPY

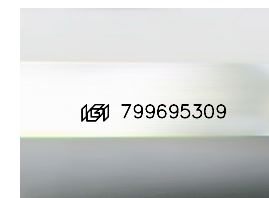
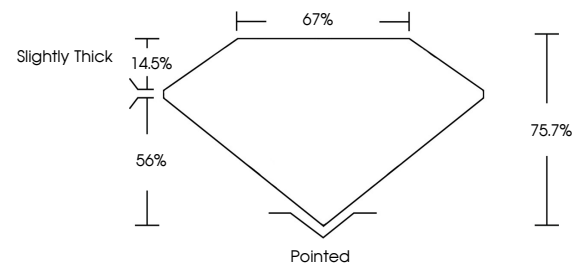
799695309
Report verification at igi.org



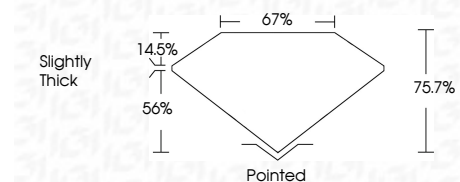
June 16, 2026
IGI Report Number **799695309**
Description **NATURAL DIAMOND**
Shape and Cutting Style **PRINCESS CUT**
Measurements **5.69 X 5.60 X 4.24 MM**
GRADING RESULTS
Carat Weight **1.20 CARAT**
Color Grade **I**
Clarity Grade **VS 2**
Cut Grade **VERY GOOD**

June 16, 2026
IGI Report Number **799695309**
Description **NATURAL DIAMOND**
Shape and Cutting Style **PRINCESS CUT**
Measurements **5.69 X 5.60 X 4.24 MM**

PROPORTIONS



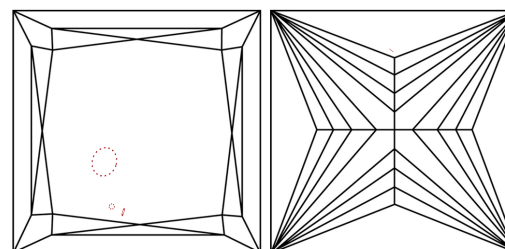
Sample Image Used



GRADING RESULTS

Carat Weight **1.20 CARAT**
Color Grade **I**
Clarity Grade **VS 2**
Cut Grade **VERY GOOD**

CLARITY CHARACTERISTICS



KEY TO SYMBOLS

Red symbols indicate internal characteristics.
Green symbols indicate external characteristics.

COLOR

D - F	G - J	K - M	N - R	S - Z	FANCY
Colorless	Near Colorless	Slightly Tinted	Very Light Color	Light Color	

CLARITY

FL	IF	VVS 1-2	VS 1-2	SI 1-2	I 1-3
Flawless	Internally Flawless	Very Very Slightly Included	Very Slightly Included	Slightly Included	Included

ADDITIONAL GRADING INFORMATION

Polish **EXCELLENT**
Symmetry **EXCELLENT**
Fluorescence **NONE**
Inscription(s) **(IGI) 799695309**

ADDITIONAL GRADING INFORMATION

Polish **EXCELLENT**
Symmetry **EXCELLENT**
Fluorescence **NONE**
Inscription(s) **(IGI) 799695309**



IGI

June 16, 2026
IGI Report No. 799695309
PRINCESS CUT
5.69 X 5.60 X 4.24 MM
1.20 CARAT
I
VS 2
VERY GOOD
76.7%
67%
Slightly Thick
Pointed
EXCELLENT
EXCELLENT
NONE
(IGI) 799695309