



**ELECTRONIC COPY**

799695193  
Report verification at [igi.org](http://igi.org)



June 5, 2026  
IGI Report Number **799695193**  
Description **NATURAL DIAMOND**  
Shape and Cutting Style **PRINCESS CUT**  
Measurements **5.47 X 5.38 X 3.96 MM**  
**GRADING RESULTS**  
Carat Weight **1.01 CARAT**  
Color Grade **H**  
Clarity Grade **VVS 2**  
Cut Grade **VERY GOOD**

**DIAMOND REPORT**

June 5, 2026  
IGI Report Number **799695193**  
Description **NATURAL DIAMOND**  
Shape and Cutting Style **PRINCESS CUT**  
Measurements **5.47 X 5.38 X 3.96 MM**

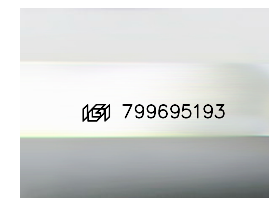
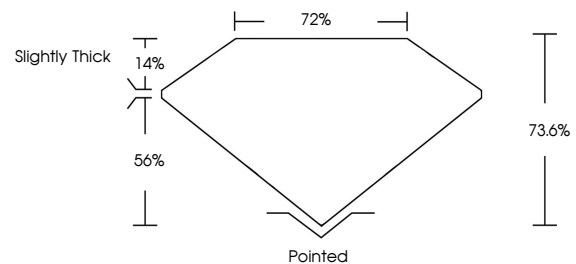
**GRADING RESULTS**

Carat Weight **1.01 CARAT**  
Color Grade **H**  
Clarity Grade **VVS 2**  
Cut Grade **VERY GOOD**

**ADDITIONAL GRADING INFORMATION**

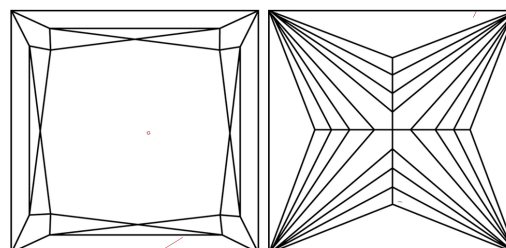
Polish **EXCELLENT**  
Symmetry **EXCELLENT**  
Fluorescence **NONE**  
Inscription(s) **799695193**

**PROPORTIONS**



Sample Image Used

**CLARITY CHARACTERISTICS**



**KEY TO SYMBOLS**

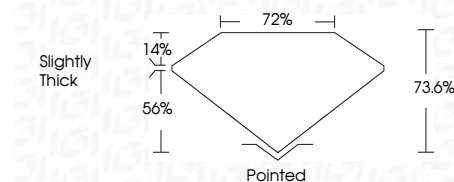
Red symbols indicate internal characteristics.  
Green symbols indicate external characteristics.

**COLOR**

D - F	G - J	K - M	N - R	S - Z	FANCY
Colorless	Near Colorless	Slightly Tinted	Very Light Color	Light Color	

**CLARITY**

FL	IF	VVS 1-2	VS 1-2	SI 1-2	I 1-3
Flawless	Internally Flawless	Very Very Slightly Included	Very Slightly Included	Slightly Included	Included



**ADDITIONAL GRADING INFORMATION**

Polish **EXCELLENT**  
Symmetry **EXCELLENT**  
Fluorescence **NONE**  
Inscription(s) **799695193**



**IGI**



June 5, 2026  
IGI Report No. **799695193**  
**PRINCESS CUT**  
**5.47 X 5.38 X 3.96 MM**  
Carat Weight **1.01 CARAT**  
Color Grade **H**  
Clarity Grade **VVS 2**  
Cut Grade **VERY GOOD**  
Depth **73.6%**  
Table **72%**  
Girdle **Slightly Thick**  
Culet **Pointed**  
Polish **EXCELLENT**  
Symmetry **EXCELLENT**  
Fluorescence **NONE**  
Inscriptions(s) **799695193**