



ELECTRONIC COPY

799695181
Report verification at igi.org



June 5, 2026

IGI Report Number **799695181**

Description **NATURAL DIAMOND**

Shape and Cutting Style **SQUARE CUSHION MODIFIED
BRILLIANT**

Measurements **6.12 X 6.02 X 4.13 MM**

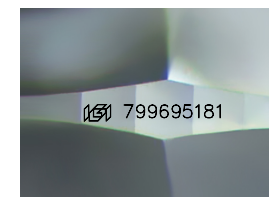
GRADING RESULTS

Carat Weight **1.30 CARAT**

Color Grade **H**

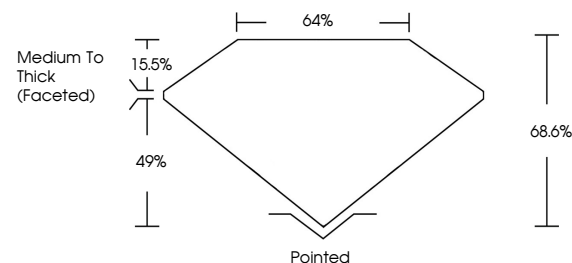
Clarity Grade **VVS 2**

Cut Grade **VERY GOOD**

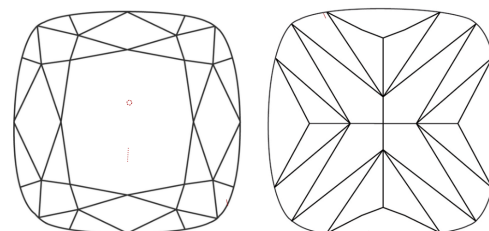


Sample Image Used

PROPORTIONS



CLARITY CHARACTERISTICS



KEY TO SYMBOLS

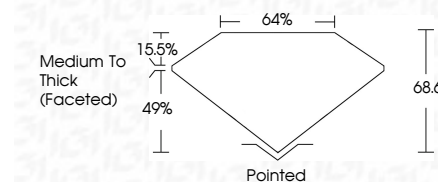
Red symbols indicate internal characteristics.
Green symbols indicate external characteristics.

COLOR

D - F	G - J	K - M	N - R	S - Z	FANCY
Colorless	Near Colorless	Slightly Tinted	Very Light Color	Light Color	

CLARITY

FL	IF	VVS ¹⁻²	VS ¹⁻²	SI ¹⁻²	I ¹⁻³
Flawless	Internally Flawless	Very Very Slightly Included	Very Slightly Included	Slightly Included	Included



ADDITIONAL GRADING INFORMATION

Polish **EXCELLENT**

Symmetry **EXCELLENT**

Fluorescence **NONE**

Inscription(s) **IGI 799695181**

June 5, 2026
IGI Report Number **799695181**
Description **NATURAL DIAMOND**
Shape and Cutting Style **SQUARE CUSHION MODIFIED
BRILLIANT**
Measurements **6.12 X 6.02 X 4.13 MM**

GRADING RESULTS

Carat Weight **1.30 CARAT**

Color Grade **H**

Clarity Grade **VVS 2**

Cut Grade **VERY GOOD**

ADDITIONAL GRADING INFORMATION

Polish **EXCELLENT**

Symmetry **EXCELLENT**

Fluorescence **NONE**

Inscription(s) **IGI 799695181**



IGI



June 5, 2026
IGI Report No 799695181
SQUARE CUSHION MODIFIED BRILLIANT
6.12 X 6.02 X 4.13 MM
Carat Weight **1.30 CARAT**
Color Grade **H**
Clarity Grade **VVS 2**
Cut Grade **VERY GOOD**
Depth **68.6%**
Table **64%**
Girdle **Medium To Thick (Faceted)**
Culet **Pointed**
Polish **EXCELLENT**
Symmetry **EXCELLENT**
Fluorescence **NONE**
Inscriptions(s) **IGI 799695181**