



**ELECTRONIC COPY**

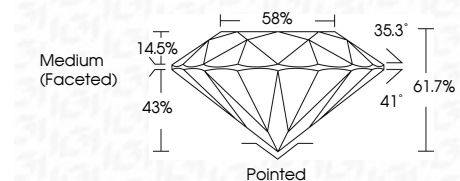
799695171  
Report verification at igi.org



June 5, 2026  
IGI Report Number **799695171**  
Description **NATURAL DIAMOND**  
Shape and Cutting Style **ROUND BRILLIANT**  
Measurements **6.42 - 6.45 X 3.97 MM**

**GRADING RESULTS**

Carat Weight **1.03 CARAT**  
Color Grade **J**  
Clarity Grade **VS 1**  
Cut Grade **EXCELLENT**



**ADDITIONAL GRADING INFORMATION**

Polish **EXCELLENT**  
Symmetry **EXCELLENT**  
Fluorescence **NONE**  
Inscription(s) **IGI 799695171**  
Comments: IDEAL CUT ROUND BRILLIANT



**IGI**

June 5, 2026  
IGI Report No 799695171  
**ROUND BRILLIANT**  
6.42 - 6.45 X 3.97 MM  
1.03 CARAT  
J  
EXCELLENT  
VS 1  
EXCELLENT  
61.7%  
58%  
Medium (Faceted)  
Pointed  
EXCELLENT  
EXCELLENT  
NONE  
IGI 799695171  
Comments: IDEAL CUT ROUND BRILLIANT

**DIAMOND REPORT**

June 5, 2026  
IGI Report Number **799695171**  
Description **NATURAL DIAMOND**  
Shape and Cutting Style **ROUND BRILLIANT**  
Measurements **6.42 - 6.45 X 3.97 MM**

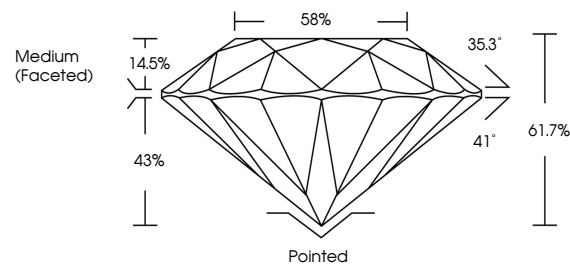
**GRADING RESULTS**

Carat Weight **1.03 CARAT**  
Color Grade **J**  
Clarity Grade **VS 1**  
Cut Grade **EXCELLENT**

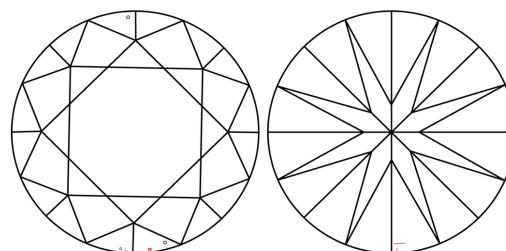
**ADDITIONAL GRADING INFORMATION**

Polish **EXCELLENT**  
Symmetry **EXCELLENT**  
Fluorescence **NONE**  
Inscription(s) **IGI 799695171**  
Comments: IDEAL CUT ROUND BRILLIANT

**PROPORTIONS**

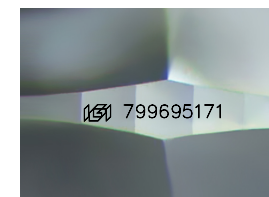


**CLARITY CHARACTERISTICS**



**KEY TO SYMBOLS**

Red symbols indicate internal characteristics.  
Green symbols indicate external characteristics.



Sample Image Used

**COLOR**

D - F	G - J	K - M	N - R	S - Z	FANCY
Colorless	Near Colorless	Slightly Tinted	Very Light Color	Light Color	

**CLARITY**

FL	IF	VVS <sup>1-2</sup>	VS <sup>1-2</sup>	SI <sup>1-2</sup>	I <sup>1-3</sup>
Flawless	Internally Flawless	Very Very Slightly Included	Very Slightly Included	Slightly Included	Included

