



ELECTRONIC COPY

799665350
Report verification at igi.org



May 19, 2026
IGI Report Number **799665350**
Description **NATURAL DIAMOND**
Shape and Cutting Style **PRINCESS CUT**
Measurements **6.30 X 6.30 X 4.40 MM**
GRADING RESULTS
Carat Weight **1.43 CARAT**
Color Grade **K**
Clarity Grade **I 1**
Cut Grade **VERY GOOD**

DIAMOND REPORT

May 19, 2026
IGI Report Number **799665350**
Description **NATURAL DIAMOND**
Shape and Cutting Style **PRINCESS CUT**
Measurements **6.30 X 6.30 X 4.40 MM**

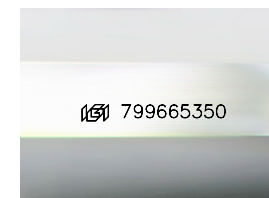
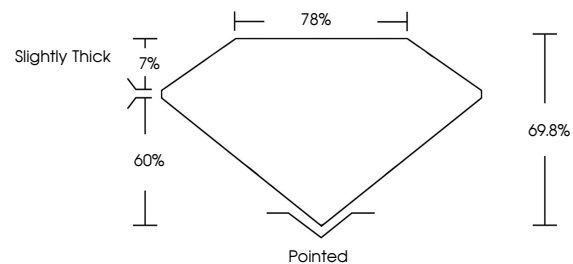
GRADING RESULTS

Carat Weight **1.43 CARAT**
Color Grade **K**
Clarity Grade **I 1**
Cut Grade **VERY GOOD**

ADDITIONAL GRADING INFORMATION

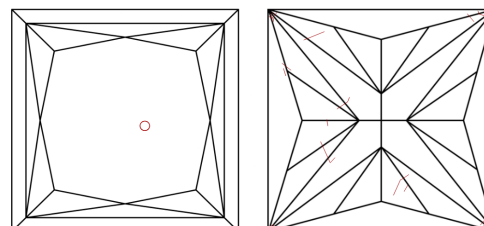
Polish **EXCELLENT**
Symmetry **EXCELLENT**
Fluorescence **NONE**
Inscription(s) **799665350**

PROPORTIONS



Sample Image Used

CLARITY CHARACTERISTICS



KEY TO SYMBOLS

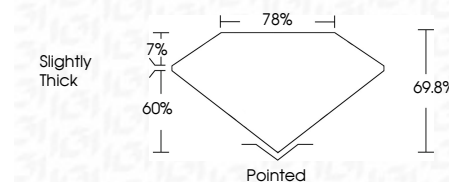
Red symbols indicate internal characteristics.
Green symbols indicate external characteristics.

COLOR

D - F	G - J	K - M	N - R	S - Z	FANCY
Colorless	Near Colorless	Slightly Tinted	Very Light Color	Light Color	

CLARITY

FL	IF	VVS ¹⁻²	VS ¹⁻²	SI ¹⁻²	I ¹⁻³
Flawless	Internally Flawless	Very Very Slightly Included	Very Slightly Included	Slightly Included	Included



ADDITIONAL GRADING INFORMATION

Polish **EXCELLENT**
Symmetry **EXCELLENT**
Fluorescence **NONE**
Inscription(s) **799665350**



IGI



May 19, 2026
IGI Report No 799665350
PRINCESS CUT
6.30 X 6.30 X 4.40 MM
1.43 CARAT
K
I 1
VERY GOOD
60.8%
78%
Slightly Thick
Pointed
EXCELLENT
EXCELLENT
NONE
NONE
 799665350