



ELECTRONIC COPY

799627189
Report verification at igi.org



May 14, 2026
IGI Report Number **799627189**
Description **NATURAL DIAMOND**
Shape and Cutting Style **CUT CORNERED
RECTANGULAR MODIFIED
BRILLIANT**
Measurements **6.33 X 4.92 X 3.50 MM**
GRADING RESULTS
Carat Weight **1.01 CARAT**
Color Grade **I**
Clarity Grade **VS 2**
Cut Grade **VERY GOOD**

DIAMOND REPORT

May 14, 2026
IGI Report Number **799627189**
Description **NATURAL DIAMOND**
Shape and Cutting Style **CUT CORNERED RECTANGULAR
MODIFIED BRILLIANT**
Measurements **6.33 X 4.92 X 3.50 MM**

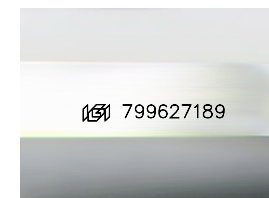
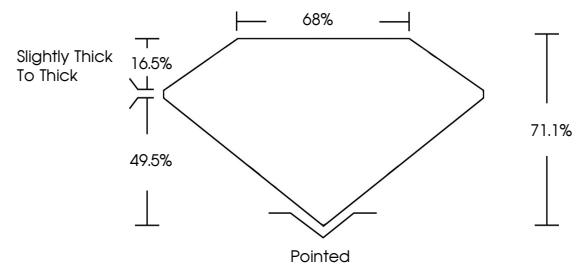
GRADING RESULTS

Carat Weight **1.01 CARAT**
Color Grade **I**
Clarity Grade **VS 2**
Cut Grade **VERY GOOD**

ADDITIONAL GRADING INFORMATION

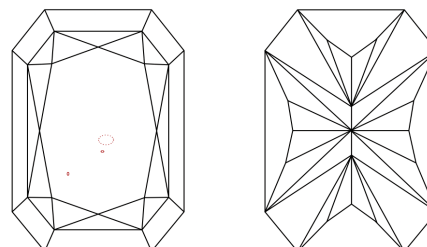
Polish **EXCELLENT**
Symmetry **EXCELLENT**
Fluorescence **SLIGHT**
Inscription(s) **799627189**

PROPORTIONS



Sample Image Used

CLARITY CHARACTERISTICS



KEY TO SYMBOLS

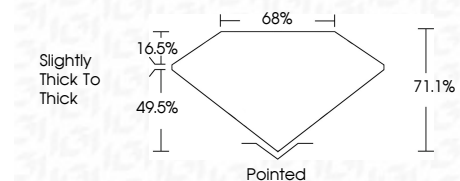
Red symbols indicate internal characteristics.
Green symbols indicate external characteristics.

COLOR

D - F	G - J	K - M	N - R	S - Z	FANCY
Colorless	Near Colorless	Slightly Tinted	Very Light Color	Light Color	

CLARITY

FL	IF	VVS ¹⁻²	VS ¹⁻²	SI ¹⁻²	I ¹⁻³
Flawless	Internally Flawless	Very Very Slightly Included	Very Slightly Included	Slightly Included	Included



ADDITIONAL GRADING INFORMATION

Polish **EXCELLENT**
Symmetry **EXCELLENT**
Fluorescence **SLIGHT**
Inscription(s) **799627189**



IGI



May 14, 2026
IGI Report No 799627189
CUT CORNERED RECT. MODIFIED BRILLIANT
6.33 X 4.92 X 3.50 MM
Carat Weight **1.01 CARAT**
Color Grade **I**
Clarity Grade **VS 2**
Cut Grade **VERY GOOD**
Depth **71.1%**
Table **68%**
Girdle **Slightly thick to thick**
Culet **Pointed**
Polish **EXCELLENT**
Symmetry **EXCELLENT**
Fluorescence **SLIGHT**
Inscriptions(s) **799627189**