



ELECTRONIC COPY

798618488
Report verification at igi.org



May 18, 2026

IGI Report Number **798618488**

Description **NATURAL DIAMOND**

Shape and Cutting Style **ROUND BRILLIANT**

Measurements **7.47 - 7.53 X 4.59 MM**

GRADING RESULTS

Carat Weight **1.56 CARAT**

Color Grade **I**

Clarity Grade **INTERNALLY FLAWLESS**

Cut Grade **EXCELLENT**

May 18, 2026

IGI Report Number **798618488**

Description **NATURAL DIAMOND**

Shape and Cutting Style **ROUND BRILLIANT**

Measurements **7.47 - 7.53 X 4.59 MM**

GRADING RESULTS

Carat Weight **1.56 CARAT**

Color Grade **I**

Clarity Grade **INTERNALLY FLAWLESS**

Cut Grade **EXCELLENT**

ADDITIONAL GRADING INFORMATION

Polish **EXCELLENT**

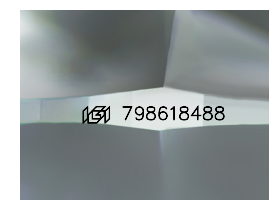
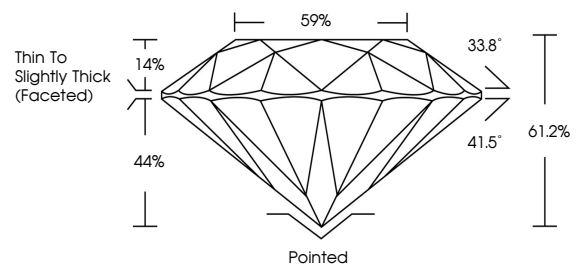
Symmetry **EXCELLENT**

Fluorescence **NONE**

Inscription(s) **798618488**

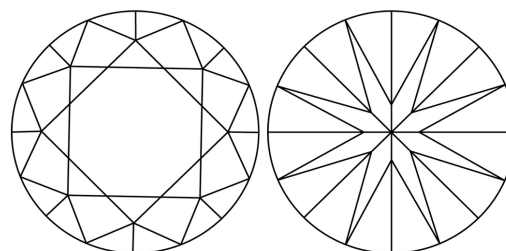
Comments: IDEAL CUT ROUND BRILLIANT

PROPORTIONS



Sample Image Used

CLARITY CHARACTERISTICS



KEY TO SYMBOLS

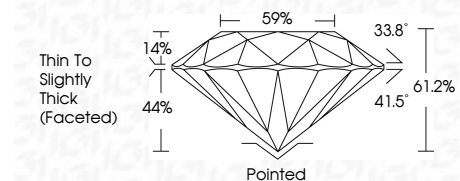
Red symbols indicate internal characteristics.
Green symbols indicate external characteristics.

COLOR

D - F	G - J	K - M	N - R	S - Z	FANCY
Colorless	Near Colorless	Slightly Tinted	Very Light Color	Light Color	

CLARITY

FL	IF	VVS ¹⁻²	VS ¹⁻²	SI ¹⁻²	I ¹⁻³
Flawless	Internally Flawless	Very Very Slightly Included	Very Slightly Included	Slightly Included	Included



ADDITIONAL GRADING INFORMATION

Polish **EXCELLENT**

Symmetry **EXCELLENT**

Fluorescence **NONE**

Inscription(s) **798618488**

Comments: IDEAL CUT ROUND BRILLIANT



IGI



May 18, 2026
IGI Report No 798618488
ROUND BRILLIANT
7.47 - 7.53 X 4.59 MM
1.56 CARAT
Color Grade I
Clarity Grade EXCELLENT
Depth 61.2%
Table 59%
Girdle Thin To Slightly Thick (Faceted)
Culet Pointed
Polish EXCELLENT
Symmetry EXCELLENT
Fluorescence NONE
Inscriptions(s) 798618488
Comments: IDEAL CUT ROUND BRILLIANT