



ELECTRONIC COPY

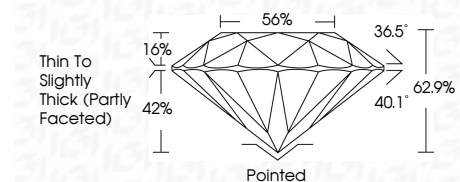
797688815
Report verification at igi.org



May 6, 2026
IGI Report Number **797688815**
Description **NATURAL DIAMOND**
Shape and Cutting Style **ROUND BRILLIANT**
Measurements **9.31 - 9.40 X 5.90 MM**

GRADING RESULTS

Carat Weight **3.30 CARATS**
Color Grade **J**
Clarity Grade **VVS 2**
Cut Grade **EXCELLENT**



ADDITIONAL GRADING INFORMATION

Polish **EXCELLENT**
Symmetry **EXCELLENT**
Fluorescence **NONE**
Inscription(s) **IGI 797688815**



IGI

May 6, 2026
IGI Report No 797688815
ROUND BRILLIANT
3.30 CARATS J
Carat Weight **3.30 CARATS**
Color Grade **J**
Clarity Grade **VVS 2**
Depth **62.9%**
Table **56%**
Girdle **Thin To Slightly Thick (Partly Faceted)**
Culet **Pointed**
Polish **EXCELLENT**
Symmetry **EXCELLENT**
Fluorescence **NONE**
Inscriptions(s) **IGI 797688815**

DIAMOND REPORT

May 6, 2026
IGI Report Number **797688815**
Description **NATURAL DIAMOND**
Shape and Cutting Style **ROUND BRILLIANT**
Measurements **9.31 - 9.40 X 5.90 MM**

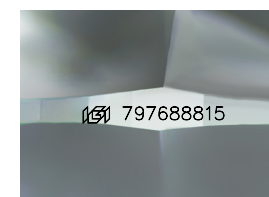
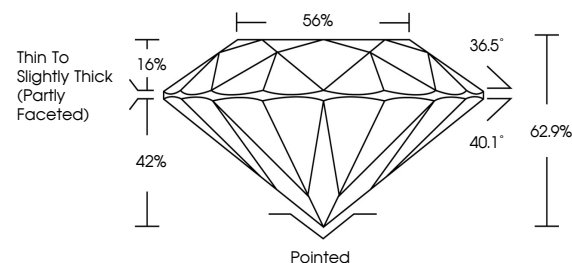
GRADING RESULTS

Carat Weight **3.30 CARATS**
Color Grade **J**
Clarity Grade **VVS 2**
Cut Grade **EXCELLENT**

ADDITIONAL GRADING INFORMATION

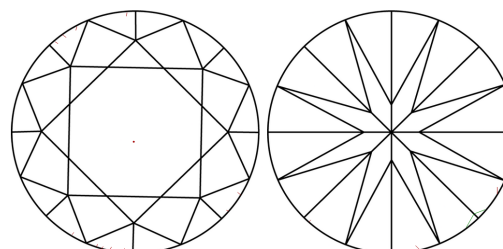
Polish **EXCELLENT**
Symmetry **EXCELLENT**
Fluorescence **NONE**
Inscription(s) **IGI 797688815**

PROPORTIONS



Sample Image Used

CLARITY CHARACTERISTICS



KEY TO SYMBOLS

Red symbols indicate internal characteristics.
Green symbols indicate external characteristics.

COLOR

D - F	G - J	K - M	N - R	S - Z	FANCY
Colorless	Near Colorless	Slightly Tinted	Very Light Color	Light Color	

CLARITY

FL	IF	VVS 1-2	VS 1-2	SI 1-2	I 1-3
Flawless	Internally Flawless	Very Very Slightly Included	Very Slightly Included	Slightly Included	Included

