



May 23, 2026

IGI Report Number 797679295

CUT CORNERED RECTANGULAR

MODIFIED BRILLIANT

NATURAL DIAMOND

5.05 X 3.69 X 2.51 MM

Carat Weight 0.41 CARAT

Color Grade F

Clarity Grade VS 1

Cut Grade EXCELLENT

Polish EXCELLENT

Symmetry EXCELLENT

Fluorescence NONE

Inscription(s) IGI 797679295

**DIAMOND REPORT**

May 23, 2026

IGI Report Number

797679295

Description

NATURAL DIAMOND

Shape and Cutting Style

CUT CORNERED RECTANGULAR MODIFIED  
BRILLIANT

Measurements

5.05 X 3.69 X 2.51 MM

**GRADING RESULTS**

Carat Weight

0.41 CARAT

Color Grade

F

Clarity Grade

VS 1

Cut Grade

EXCELLENT

**ADDITIONAL GRADING INFORMATION**

Polish

EXCELLENT

Symmetry

EXCELLENT

Fluorescence

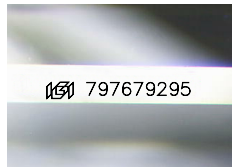
NONE

Identification Features

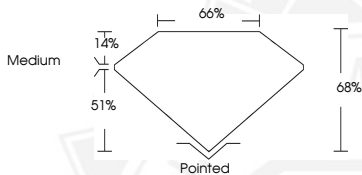
CLOUD

Inscription(s)

IGI 797679295



Sample Image Used



May 23, 2026

IGI Report Number 797679295

CUT CORNERED RECTANGULAR

MODIFIED BRILLIANT

NATURAL DIAMOND

5.05 X 3.69 X 2.51 MM

Carat Weight 0.41 CARAT

Color Grade F

Clarity Grade VS 1

Cut Grade EXCELLENT

Polish EXCELLENT

Symmetry EXCELLENT

Fluorescence NONE

Inscription(s) IGI 797679295



THIS DOCUMENT WAS PRODUCED WITH THE FOLLOWING SECURITY MEASURES: SPECIAL DOCUMENT PAPER, INK SCREENS, WATERMARK, BACKGROUND DESIGNS, HOLOGRAM AND OTHER SECURITY FEATURES NOT LISTED AND DO EXCEED DOCUMENT SECURITY INDUSTRY GUIDELINES.