



DIAMOND REPORT

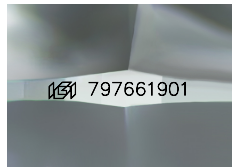
May 26, 2026
IGI Report Number **797661901**
Description **NATURAL DIAMOND**
Shape and Cutting Style **ROUND BRILLIANT**
Measurements **5.61 - 5.63 X 3.57 MM**

GRADING RESULTS

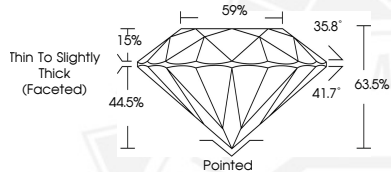
Carat Weight **0.70 CARAT**
Color Grade **J**
Clarity Grade **VS 1**
Cut Grade **EXCELLENT**

ADDITIONAL GRADING INFORMATION

Polish **EXCELLENT**
Symmetry **EXCELLENT**
Fluorescence **SLIGHT**
Identification Features **FEATHER**
Inscription(s) **IGI 797661901**



Sample Image Used



May 26, 2026

IGI Report Number **797661901**
ROUND BRILLIANT
NATURAL DIAMOND
5.61 - 5.63 X 3.57 MM

Carat Weight **0.70 CARAT**
Color Grade **J**
Clarity Grade **VS 1**
Cut Grade **EXCELLENT**
Polish **EXCELLENT**
Symmetry **EXCELLENT**
Fluorescence **SLIGHT**
Inscription(s) **IGI 797661901**



May 26, 2026

IGI Report Number **797661901**
ROUND BRILLIANT
NATURAL DIAMOND
5.61 - 5.63 X 3.57 MM

Carat Weight **0.70 CARAT**
Color Grade **J**
Clarity Grade **VS 1**
Cut Grade **EXCELLENT**
Polish **EXCELLENT**
Symmetry **EXCELLENT**
Fluorescence **SLIGHT**
Inscription(s) **IGI 797661901**



THIS DOCUMENT WAS PRODUCED WITH THE FOLLOWING SECURITY MEASURES: SPECIAL DOCUMENT PAPER, INK SCREENS, WATERMARK, BACKGROUND DESIGNS, HOLOGRAM AND OTHER SECURITY FEATURES NOT LISTED AND DO EXCEED DOCUMENT SECURITY INDUSTRY GUIDELINES.