



**ELECTRONIC COPY**

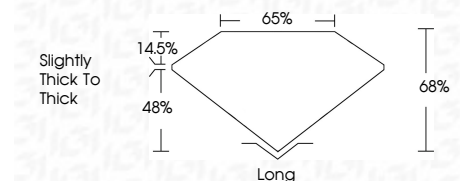
795650559  
Report verification at [igi.org](http://igi.org)



May 5, 2026  
IGI Report Number **795650559**  
Description **NATURAL DIAMOND**  
Shape and Cutting Style **EMERALD CUT**  
Measurements **6.52 X 4.82 X 3.28 MM**

**GRADING RESULTS**

Carat Weight **1.01 CARAT**  
Color Grade **H**  
Clarity Grade **VVS 2**  
Cut Grade **VERY GOOD**



**ADDITIONAL GRADING INFORMATION**

Polish **EXCELLENT**  
Symmetry **EXCELLENT**  
Fluorescence **NONE**  
Inscription(s) **(IGI) 795650559**



**IGI**

May 5, 2026  
IGI Report No 795650559  
**EMERALD CUT**  
6.52 X 4.82 X 3.28 MM  
Carat Weight **1.01 CARAT**  
Color Grade **H**  
Clarity Grade **VVS 2**  
Cut Grade **VERY GOOD**  
Depth **48%**  
Table **65%**  
Girdle **Slightly thick to Thick**  
Culet **Long**  
Polish **EXCELLENT**  
Symmetry **EXCELLENT**  
Fluorescence **NONE**  
Inscriptions(s) **(IGI) 795650559**

**DIAMOND REPORT**

May 5, 2026  
IGI Report Number **795650559**  
Description **NATURAL DIAMOND**  
Shape and Cutting Style **EMERALD CUT**  
Measurements **6.52 X 4.82 X 3.28 MM**

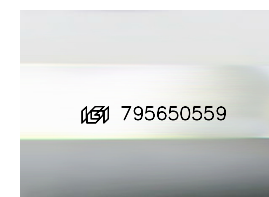
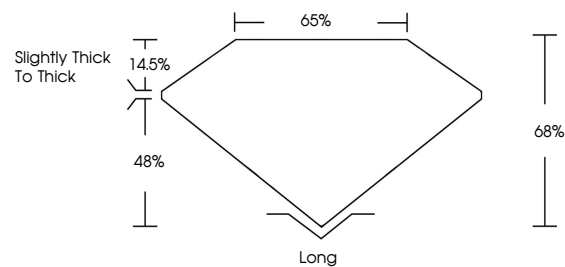
**GRADING RESULTS**

Carat Weight **1.01 CARAT**  
Color Grade **H**  
Clarity Grade **VVS 2**  
Cut Grade **VERY GOOD**

**ADDITIONAL GRADING INFORMATION**

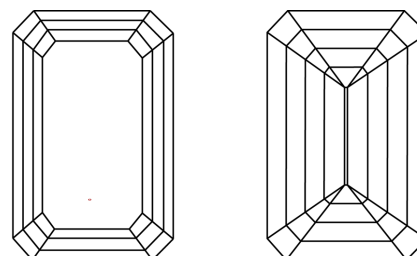
Polish **EXCELLENT**  
Symmetry **EXCELLENT**  
Fluorescence **NONE**  
Inscription(s) **(IGI) 795650559**

**PROPORTIONS**



Sample Image Used

**CLARITY CHARACTERISTICS**



**KEY TO SYMBOLS**

Red symbols indicate internal characteristics.  
Green symbols indicate external characteristics.

**COLOR**

D - F	G - J	K - M	N - R	S - Z	FANCY
Colorless	Near Colorless	Slightly Tinted	Very Light Color	Light Color	

**CLARITY**

FL	IF	VVS <sup>1-2</sup>	VS <sup>1-2</sup>	SI <sup>1-2</sup>	I <sup>1-3</sup>
Flawless	Internally Flawless	Very Very Slightly Included	Very Slightly Included	Slightly Included	Included

