



ELECTRONIC COPY

795614239
Report verification at igi.org



April 30, 2026

IGI Report Number **795614239**

Description **NATURAL DIAMOND**

Shape and Cutting Style **EMERALD CUT**

Measurements **8.07 X 5.86 X 4.09 MM**

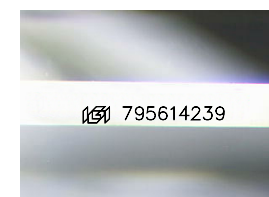
GRADING RESULTS

Carat Weight **1.90 CARAT**

Color Grade **K**

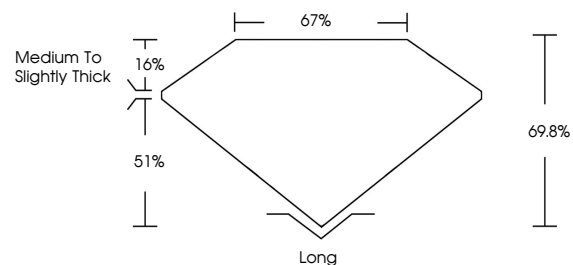
Clarity Grade **VS 2**

Cut Grade **VERY GOOD**

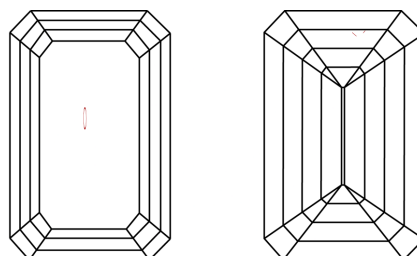


Sample Image Used

PROPORTIONS



CLARITY CHARACTERISTICS



KEY TO SYMBOLS

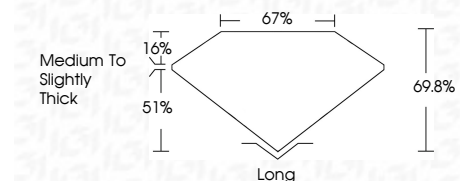
Red symbols indicate internal characteristics.
Green symbols indicate external characteristics.

COLOR

D - F	G - J	K - M	N - R	S - Z	FANCY
Colorless	Near Colorless	Slightly Tinted	Very Light Color	Light Color	

CLARITY

FL	IF	VVS 1-2	VS 1-2	SI 1-2	I 1-3
Flawless	Internally Flawless	Very Very Slightly Included	Very Slightly Included	Slightly Included	Included



ADDITIONAL GRADING INFORMATION

Polish **EXCELLENT**

Symmetry **EXCELLENT**

Fluorescence **STRONG**

Inscription(s) **IGI 795614239**



IGI



April 30, 2026	1.90 CARAT	K	VS 2	67%	69.8%	Medium To Slightly Thick	Long
IGI Report No 795614239	8.07 X 5.86 X 4.09 MM	EMERALD CUT	VERY GOOD	67%	69.8%	Medium To Slightly Thick	Long
Carat Weight	1.90 CARAT	Color Grade	K	Clarity Grade	VS 2	Depth	69.8%
Color Grade	K	Cut Grade	VERY GOOD	Table	67%	Girdle	Medium To Slightly Thick
Clarity Grade	VS 2	Polish	EXCELLENT	Symmetry	EXCELLENT	Fluorescence	STRONG
Depth	69.8%	Inscription(s)	IGI 795614239				