



**ELECTRONIC COPY**

794678526  
Report verification at [igi.org](http://igi.org)



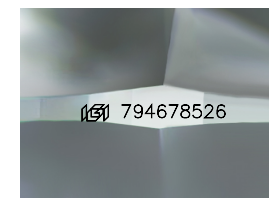
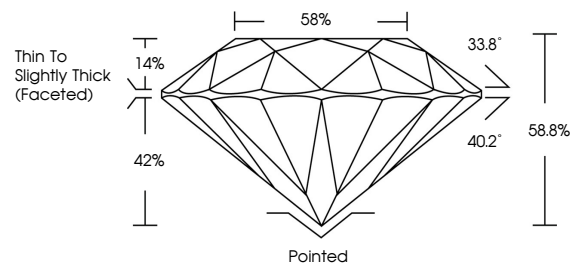
April 30, 2026  
IGI Report Number **794678526**  
Description **NATURAL DIAMOND**  
Shape and Cutting Style **ROUND BRILLIANT**  
Measurements **6.54 - 6.58 X 3.85 MM**  
**GRADING RESULTS**  
Carat Weight **1.00 CARAT**  
Color Grade **H**  
Clarity Grade **INTERNALLY FLAWLESS**  
Cut Grade **EXCELLENT**

April 30, 2026  
IGI Report Number **794678526**  
Description **NATURAL DIAMOND**  
Shape and Cutting Style **ROUND BRILLIANT**  
Measurements **6.54 - 6.58 X 3.85 MM**

**GRADING RESULTS**  
Carat Weight **1.00 CARAT**  
Color Grade **H**  
Clarity Grade **INTERNALLY FLAWLESS**  
Cut Grade **EXCELLENT**

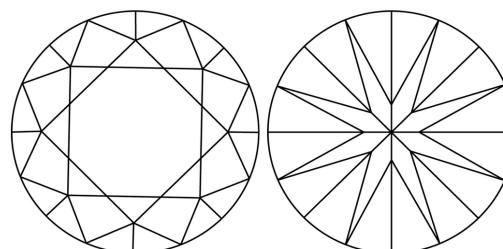
**ADDITIONAL GRADING INFORMATION**  
Polish **EXCELLENT**  
Symmetry **EXCELLENT**  
Fluorescence **NONE**  
Inscription(s) **794678526**  
Comments: IDEAL CUT ROUND BRILLIANT

**PROPORTIONS**



Sample Image Used

**CLARITY CHARACTERISTICS**



**KEY TO SYMBOLS**

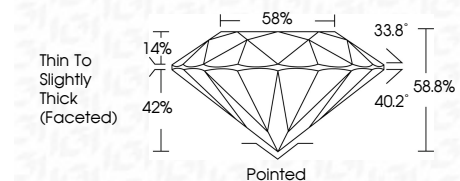
Red symbols indicate internal characteristics.  
Green symbols indicate external characteristics.

**COLOR**

D - F	G - J	K - M	N - R	S - Z	FANCY
Colorless	Near Colorless	Slightly Tinted	Very Light Color	Light Color	

**CLARITY**

FL	IF	VVS <sup>1-2</sup>	VS <sup>1-2</sup>	SI <sup>1-2</sup>	I <sup>1-3</sup>
Flawless	Internally Flawless	Very Very Slightly Included	Very Slightly Included	Slightly Included	Included



**ADDITIONAL GRADING INFORMATION**

Polish **EXCELLENT**  
Symmetry **EXCELLENT**  
Fluorescence **NONE**  
Inscription(s) **794678526**  
Comments: IDEAL CUT ROUND BRILLIANT



**IGI**



April 30, 2026  
IGI Report No 794678526  
**ROUND BRILLIANT**  
6.54 - 6.58 X 3.85 MM  
1.00 CARAT  
H  
Color Grade **EXCELLENT**  
Clarity Grade **EXCELLENT**  
Depth 88.0%  
Table 88%  
Girdle Thin To Slightly Thick (Faceted)  
Culet Pointed  
Polish **EXCELLENT**  
Symmetry **EXCELLENT**  
Fluorescence **NONE**  
Inscriptions(s) 794678526  
Comments: IDEAL CUT ROUND BRILLIANT