



**ELECTRONIC COPY**

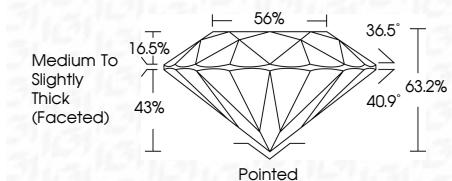
794652841  
Report verification at [igi.org](http://igi.org)



June 5, 2026  
IGI Report Number **794652841**  
Description **NATURAL DIAMOND**  
Shape and Cutting Style **ROUND BRILLIANT**  
Measurements **10.81 - 10.88 X 6.86 MM**

**GRADING RESULTS**

Carat Weight **5.01 CARATS**  
Color Grade **H**  
Clarity Grade **VS 2**  
Cut Grade **EXCELLENT**



**ADDITIONAL GRADING INFORMATION**

Polish **EXCELLENT**  
Symmetry **EXCELLENT**  
Fluorescence **NONE**  
Inscription(s) **(IGI) 794652841**



**IGI**

June 5, 2026  
IGI Report No 794652841  
**ROUND BRILLIANT**  
10.81 - 10.88 X 6.86 MM  
5.01 CARATS  
H  
VS 2  
EXCELLENT  
63.2%  
56%  
Medium To Slightly Thick (Faceted)  
Pointed  
EXCELLENT  
EXCELLENT  
NONE  
(IGI) 794652841

**DIAMOND REPORT**

June 5, 2026  
IGI Report Number **794652841**  
Description **NATURAL DIAMOND**  
Shape and Cutting Style **ROUND BRILLIANT**  
Measurements **10.81 - 10.88 X 6.86 MM**

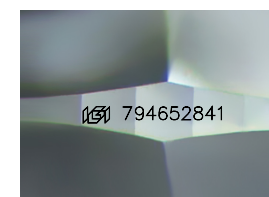
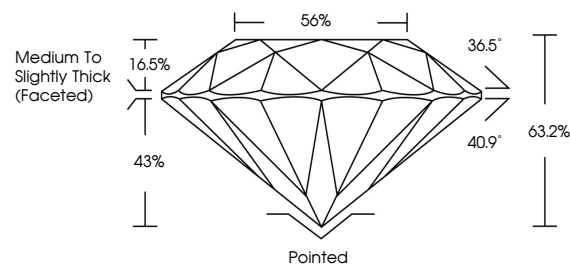
**GRADING RESULTS**

Carat Weight **5.01 CARATS**  
Color Grade **H**  
Clarity Grade **VS 2**  
Cut Grade **EXCELLENT**

**ADDITIONAL GRADING INFORMATION**

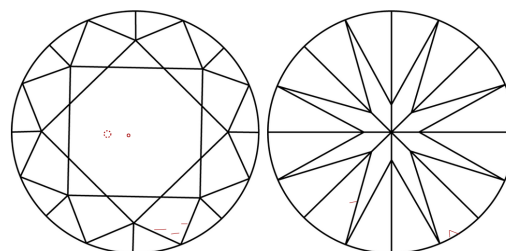
Polish **EXCELLENT**  
Symmetry **EXCELLENT**  
Fluorescence **NONE**  
Inscription(s) **(IGI) 794652841**

**PROPORTIONS**



Sample Image Used

**CLARITY CHARACTERISTICS**



**KEY TO SYMBOLS**

Red symbols indicate internal characteristics.  
Green symbols indicate external characteristics.

**COLOR**

D - F	G - J	K - M	N - R	S - Z	FANCY
Colorless	Near Colorless	Slightly Tinted	Very Light Color	Light Color	

**CLARITY**

FL	IF	VVS 1-2	VS 1-2	SI 1-2	I 1-3
Flawless	Internally Flawless	Very Very Slightly Included	Very Slightly Included	Slightly Included	Included

