



ELECTRONIC COPY

794652740
Report verification at igi.org



May 5, 2026
IGI Report Number **794652740**
Description **NATURAL DIAMOND**
Shape and Cutting Style **EMERALD CUT**
Measurements **7.31 X 5.04 X 3.42 MM**
GRADING RESULTS
Carat Weight **1.30 CARAT**
Color Grade **H**
Clarity Grade **VS 1**
Cut Grade **VERY GOOD**

May 5, 2026
IGI Report Number **794652740**
Description **NATURAL DIAMOND**
Shape and Cutting Style **EMERALD CUT**
Measurements **7.31 X 5.04 X 3.42 MM**

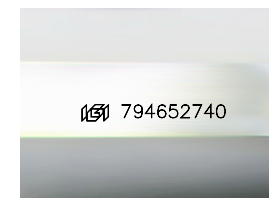
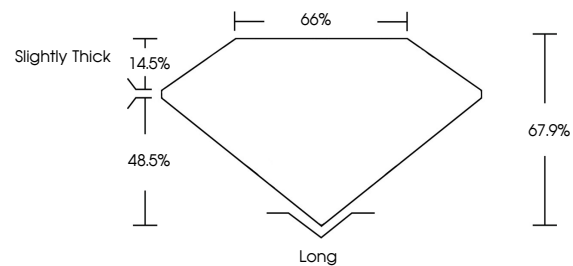
GRADING RESULTS

Carat Weight **1.30 CARAT**
Color Grade **H**
Clarity Grade **VS 1**
Cut Grade **VERY GOOD**

ADDITIONAL GRADING INFORMATION

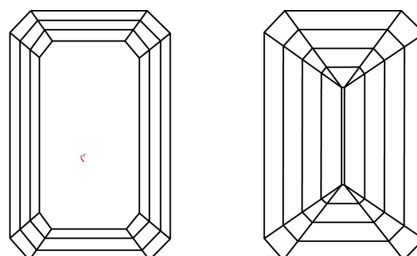
Polish **EXCELLENT**
Symmetry **EXCELLENT**
Fluorescence **NONE**
Inscription(s) **794652740**

PROPORTIONS



Sample Image Used

CLARITY CHARACTERISTICS



KEY TO SYMBOLS

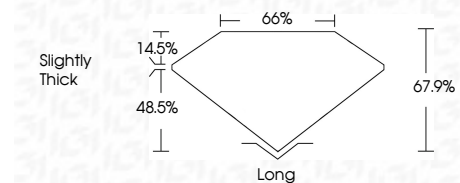
Red symbols indicate internal characteristics.
Green symbols indicate external characteristics.

COLOR

D - F	G - J	K - M	N - R	S - Z	FANCY
Colorless	Near Colorless	Slightly Tinted	Very Light Color	Light Color	

CLARITY

FL	IF	VVS ¹⁻²	VS ¹⁻²	SI ¹⁻²	I ¹⁻³
Flawless	Internally Flawless	Very Very Slightly Included	Very Slightly Included	Slightly Included	Included



ADDITIONAL GRADING INFORMATION

Polish **EXCELLENT**
Symmetry **EXCELLENT**
Fluorescence **NONE**
Inscription(s) **794652740**



IGI



May 5, 2026
IGI Report No 794652740
EMERALD CUT
1.30 CARAT
H
Color Grade
VS 1
VERY GOOD
7.31 X 5.04 X 3.42 MM
67.9%
66%
Slightly Thick
Long
EXCELLENT
EXCELLENT
NONE
794652740