



**ELECTRONIC COPY**

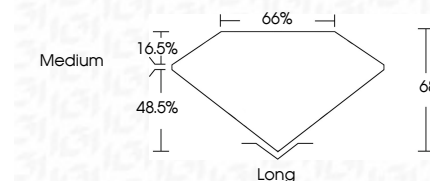
794652610  
Report verification at [igi.org](http://igi.org)



April 29, 2026  
IGI Report Number **794652610**  
Description **NATURAL DIAMOND**  
Shape and Cutting Style **EMERALD CUT**  
Measurements **6.63 X 4.65 X 3.16 MM**

**GRADING RESULTS**

Carat Weight **1.00 CARAT**  
Color Grade **F**  
Clarity Grade **VVS 1**  
Cut Grade **VERY GOOD**



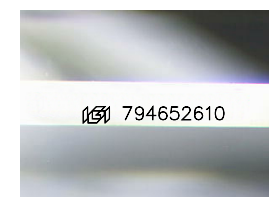
**ADDITIONAL GRADING INFORMATION**

Polish **EXCELLENT**  
Symmetry **EXCELLENT**  
Fluorescence **NONE**  
Inscription(s) **(IGI) 794652610**  
Comments: VVS1 Due to graining



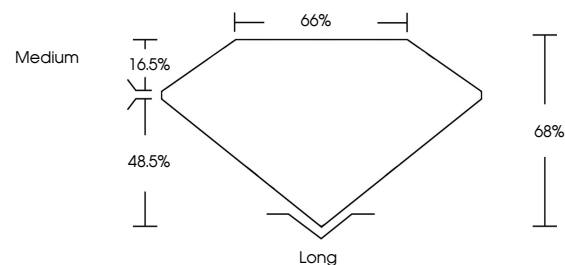
**IGI**

April 29, 2026  
IGI Report No 794652610  
**EMERALD CUT**  
6.63 X 4.65 X 3.16 MM  
1.00 CARAT  
Color Grade **F**  
Clarity Grade **VVS 1**  
Depth **68%**  
Table **48.5%**  
Girdle **Medium**  
Culet **None**  
Polish **EXCELLENT**  
Symmetry **EXCELLENT**  
Fluorescence **NONE**  
Inscription(s) **(IGI) 794652610**  
Comments: **VVS1 Due to graining**

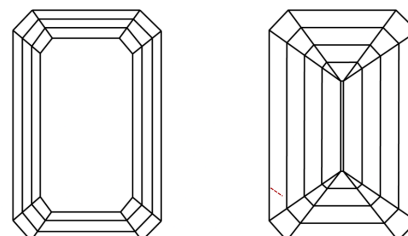


Sample Image Used

**PROPORTIONS**



**CLARITY CHARACTERISTICS**



**KEY TO SYMBOLS**

Red symbols indicate internal characteristics.  
Green symbols indicate external characteristics.

**COLOR**

D - F	G - J	K - M	N - R	S - Z	FANCY
Colorless	Near Colorless	Slightly Tinted	Very Light Color	Light Color	

**CLARITY**

FL	IF	VVS <sup>1-2</sup>	VS <sup>1-2</sup>	SI <sup>1-2</sup>	I <sup>1-3</sup>
Flawless	Internally Flawless	Very Very Slightly Included	Very Slightly Included	Slightly Included	Included

