



**ELECTRONIC COPY**

794652569  
Report verification at [igi.org](http://igi.org)

**DIAMOND REPORT**

April 27, 2026  
IGI Report Number **794652569**  
Description **NATURAL DIAMOND**  
Shape and Cutting Style **PRINCESS CUT**  
Measurements **6.70 X 6.70 X 4.89 MM**

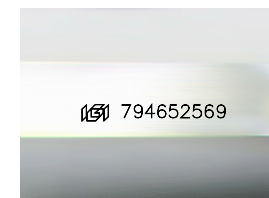
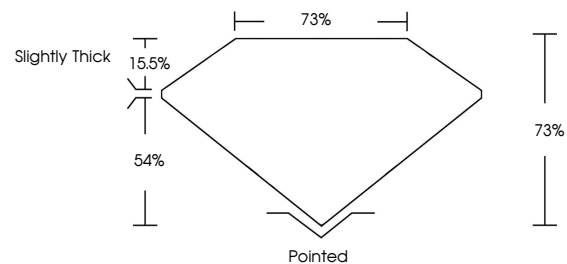
**GRADING RESULTS**

Carat Weight **2.00 CARATS**  
Color Grade **I**  
Clarity Grade **SI 1**  
Cut Grade **VERY GOOD**

**ADDITIONAL GRADING INFORMATION**

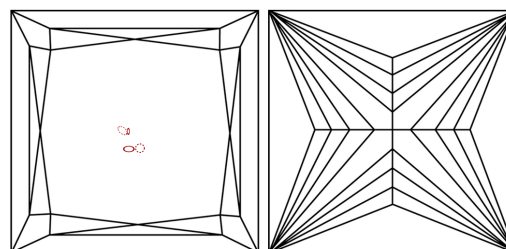
Polish **EXCELLENT**  
Symmetry **EXCELLENT**  
Fluorescence **NONE**  
Inscription(s) **794652569**

**PROPORTIONS**



Sample Image Used

**CLARITY CHARACTERISTICS**



**KEY TO SYMBOLS**

Red symbols indicate internal characteristics.  
Green symbols indicate external characteristics.

**COLOR**

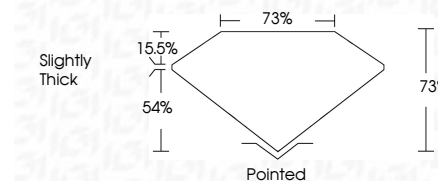
D - F	G - J	K - M	N - R	S - Z	FANCY
Colorless	Near Colorless	Slightly Tinted	Very Light Color	Light Color	

**CLARITY**

FL	IF	VVS <sup>1-2</sup>	VS <sup>1-2</sup>	SI <sup>1-2</sup>	I <sup>1-3</sup>
Flawless	Internally Flawless	Very Very Slightly Included	Very Slightly Included	Slightly Included	Included



April 27, 2026  
IGI Report Number **794652569**  
Description **NATURAL DIAMOND**  
Shape and Cutting Style **PRINCESS CUT**  
Measurements **6.70 X 6.70 X 4.89 MM**  
**GRADING RESULTS**  
Carat Weight **2.00 CARATS**  
Color Grade **I**  
Clarity Grade **SI 1**  
Cut Grade **VERY GOOD**



**ADDITIONAL GRADING INFORMATION**

Polish **EXCELLENT**  
Symmetry **EXCELLENT**  
Fluorescence **NONE**  
Inscription(s) **794652569**



**IGI**



April 27, 2026	IGI Report No 794652569	2.00 CARATS	I	SI 1	VERY GOOD	75%	75%	Slightly Thick	Pointed	EXCELLENT	EXCELLENT	NONE	794652569
PRINCESS CUT	6.70 X 6.70 X 4.89 MM	Color Grade	SI 1	Clarity Grade	Cut Grade	Depth	Table	Girdle	Culet	Polish	Symmetry	Fluorescence	Inscription(s)