



**ELECTRONIC COPY**

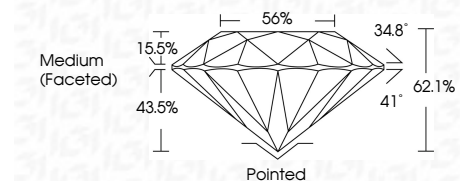
793623088  
Report verification at [igi.org](http://igi.org)



April 23, 2026  
IGI Report Number **793623088**  
Description **NATURAL DIAMOND**  
Shape and Cutting Style **ROUND BRILLIANT**  
Measurements **9.76 - 9.81 X 6.08 MM**

**GRADING RESULTS**

Carat Weight **3.55 CARATS**  
Color Grade **J**  
Clarity Grade **VS 1**  
Cut Grade **EXCELLENT**



**ADDITIONAL GRADING INFORMATION**

Polish **VERY GOOD**  
Symmetry **EXCELLENT**  
Fluorescence **NONE**  
Inscription(s) **IGI 793623088**  
Comments: IDEAL CUT ROUND BRILLIANT



**IGI**

April 23, 2026  
IGI Report No 793623088  
**ROUND BRILLIANT**  
9.76 - 9.81 X 6.08 MM  
3.55 CARATS  
J  
Color Grade  
EXCELLENT  
VS 1  
Depth  
62.1%  
Table  
56%  
Girdle  
Medium (Faceted)  
Culet  
Pointed  
Polish  
VERY GOOD  
Symmetry  
EXCELLENT  
Fluorescence  
NONE  
Inscription(s)  
IGI 793623088  
Comments:  
IDEAL CUT ROUND BRILLIANT

**DIAMOND REPORT**

April 23, 2026  
IGI Report Number **793623088**  
Description **NATURAL DIAMOND**  
Shape and Cutting Style **ROUND BRILLIANT**  
Measurements **9.76 - 9.81 X 6.08 MM**

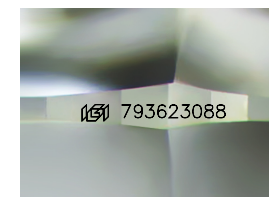
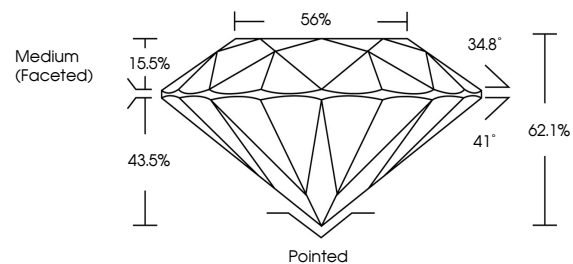
**GRADING RESULTS**

Carat Weight **3.55 CARATS**  
Color Grade **J**  
Clarity Grade **VS 1**  
Cut Grade **EXCELLENT**

**ADDITIONAL GRADING INFORMATION**

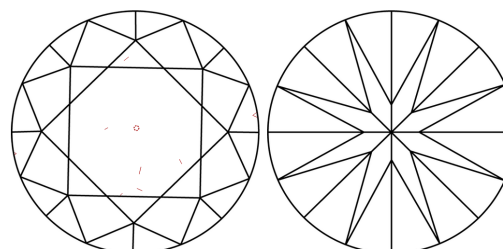
Polish **VERY GOOD**  
Symmetry **EXCELLENT**  
Fluorescence **NONE**  
Inscription(s) **IGI 793623088**  
Comments: IDEAL CUT ROUND BRILLIANT

**PROPORTIONS**



Sample Image Used

**CLARITY CHARACTERISTICS**



**KEY TO SYMBOLS**

Red symbols indicate internal characteristics.  
Green symbols indicate external characteristics.

**COLOR**

D - F	G - J	K - M	N - R	S - Z	FANCY
Colorless	Near Colorless	Slightly Tinted	Very Light Color	Light Color	

**CLARITY**

FL	IF	VVS 1-2	VS 1-2	SI 1-2	I 1-3
Flawless	Internally Flawless	Very Very Slightly Included	Very Slightly Included	Slightly Included	Included

