



ELECTRONIC COPY

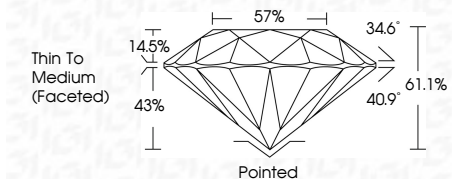
792687896
Report verification at igi.org



April 23, 2026
IGI Report Number **792687896**
Description **NATURAL DIAMOND**
Shape and Cutting Style **ROUND BRILLIANT**
Measurements **6.44 - 6.46 X 3.94 MM**

GRADING RESULTS

Carat Weight **1.00 CARAT**
Color Grade **L**
Clarity Grade **SI 1**
Cut Grade **EXCELLENT**



ADDITIONAL GRADING INFORMATION

Polish **EXCELLENT**
Symmetry **EXCELLENT**
Fluorescence **VERY SLIGHT**
Inscription(s) **IGI 792687896**
Comments: IDEAL CUT ROUND BRILLIANT



IGI

April 23, 2026
IGI Report No 792687896
ROUND BRILLIANT
6.44 - 6.46 X 3.94 MM
1.00 CARAT L
SI 1
EXCELLENT
61.1%
57%
Thin To Medium (Faceted)
Pointed
EXCELLENT
EXCELLENT
VERY SLIGHT
IGI 792687896
Comments: IDEAL CUT ROUND BRILLIANT

DIAMOND REPORT

April 23, 2026
IGI Report Number **792687896**
Description **NATURAL DIAMOND**
Shape and Cutting Style **ROUND BRILLIANT**
Measurements **6.44 - 6.46 X 3.94 MM**

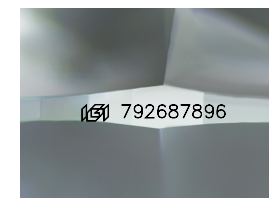
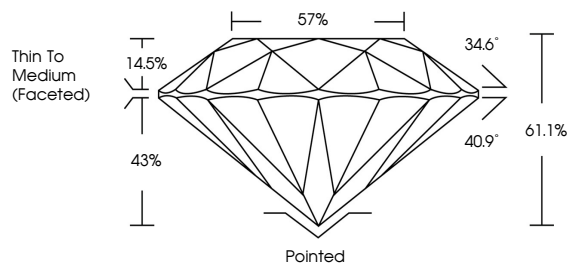
GRADING RESULTS

Carat Weight **1.00 CARAT**
Color Grade **L**
Clarity Grade **SI 1**
Cut Grade **EXCELLENT**

ADDITIONAL GRADING INFORMATION

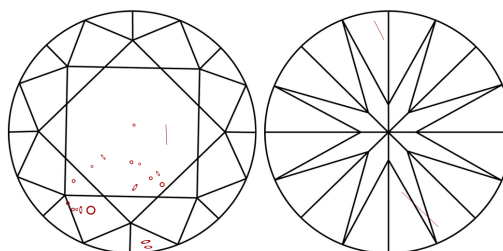
Polish **EXCELLENT**
Symmetry **EXCELLENT**
Fluorescence **VERY SLIGHT**
Inscription(s) **IGI 792687896**
Comments: IDEAL CUT ROUND BRILLIANT

PROPORTIONS



Sample Image Used

CLARITY CHARACTERISTICS



KEY TO SYMBOLS

Red symbols indicate internal characteristics.
Green symbols indicate external characteristics.

COLOR

| D - F | G - J | K - M | N - R | S - Z | FANCY |
|-----------|----------------|-----------------|------------------|-------------|-------|
| Colorless | Near Colorless | Slightly Tinted | Very Light Color | Light Color | |

CLARITY

| FL | IF | VVS ¹⁻² | VS ¹⁻² | SI ¹⁻² | I ¹⁻³ |
|----------|---------------------|-----------------------------|------------------------|-------------------|------------------|
| Flawless | Internally Flawless | Very Very Slightly Included | Very Slightly Included | Slightly Included | Included |

