



ELECTRONIC COPY

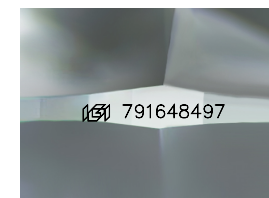
791648497
Report verification at igi.org



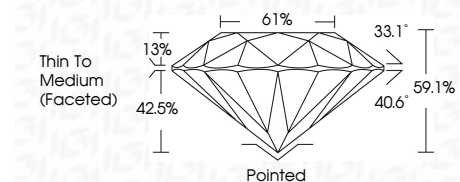
June 29, 2026
IGI Report Number **791648497**
Description **NATURAL DIAMOND**
Shape and Cutting Style **ROUND BRILLIANT**
Measurements **6.79 - 6.83 X 4.03 MM**

GRADING RESULTS

Carat Weight **1.15 CARAT**
Color Grade **I**
Clarity Grade **SI 1**
Cut Grade **EXCELLENT**



Sample Image Used



ADDITIONAL GRADING INFORMATION

Polish **EXCELLENT**
Symmetry **EXCELLENT**
Fluorescence **NONE**
Inscription(s) **(IGI) 791648497**

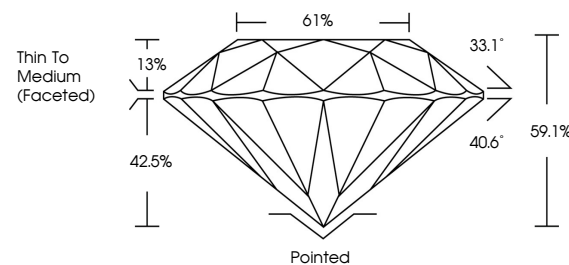


IGI

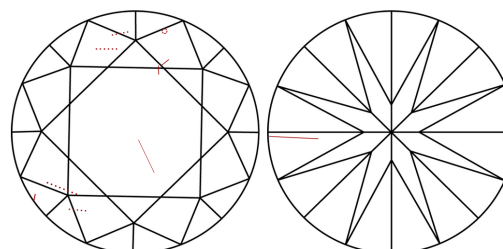
June 29, 2026
IGI Report No 791648497
ROUND BRILLIANT
6.79 - 6.83 X 4.03 MM
1.15 CARAT
I
SI 1
EXCELLENT
61%
61%
Thin To Medium (Faceted)
Pointed
EXCELLENT
Symmetry
EXCELLENT
Fluorescence
NONE
Inscriptions(s)
(IGI) 791648497



PROPORTIONS



CLARITY CHARACTERISTICS



KEY TO SYMBOLS

Red symbols indicate internal characteristics.
Green symbols indicate external characteristics.

COLOR

D - F	G - J	K - M	N - R	S - Z	FANCY
Colorless	Near Colorless	Slightly Tinted	Very Light Color	Light Color	

CLARITY

FL	IF	VVS ¹⁻²	VS ¹⁻²	SI ¹⁻²	I ¹⁻³
Flawless	Internally Flawless	Very Very Slightly Included	Very Slightly Included	Slightly Included	Included