



ELECTRONIC COPY

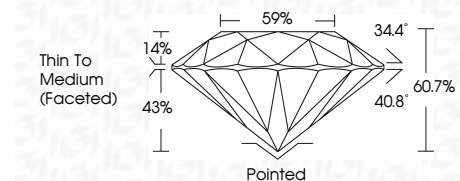
791648490
Report verification at igi.org



June 29, 2026
IGI Report Number **791648490**
Description **NATURAL DIAMOND**
Shape and Cutting Style **ROUND BRILLIANT**
Measurements **8.11 - 8.14 X 4.93 MM**

GRADING RESULTS

Carat Weight **2.00 CARATS**
Color Grade **J**
Clarity Grade **VS 2**
Cut Grade **EXCELLENT**



ADDITIONAL GRADING INFORMATION

Polish **EXCELLENT**
Symmetry **EXCELLENT**
Fluorescence **NONE**
Inscription(s) **(IGI) 791648490**
Comments: IDEAL CUT ROUND BRILLIANT



IGI

June 29, 2026
IGI Report No 791648490
ROUND BRILLIANT
8.11 - 8.14 X 4.93 MM
2.00 CARATS
J
Color Grade **EXCELLENT**
VS 2
Clarity Grade **EXCELLENT**
60.7%
Depth
59%
Thin To Medium (Faceted)
Culet
Pointed
Polish **EXCELLENT**
Symmetry **EXCELLENT**
Fluorescence **NONE**
Inscriptions(s) **(IGI) 791648490**
Comments: **IDEAL CUT ROUND BRILLIANT**

DIAMOND REPORT

June 29, 2026
IGI Report Number **791648490**
Description **NATURAL DIAMOND**
Shape and Cutting Style **ROUND BRILLIANT**
Measurements **8.11 - 8.14 X 4.93 MM**

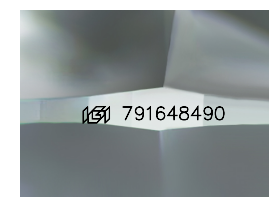
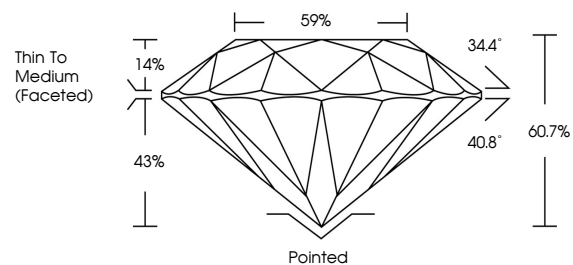
GRADING RESULTS

Carat Weight **2.00 CARATS**
Color Grade **J**
Clarity Grade **VS 2**
Cut Grade **EXCELLENT**

ADDITIONAL GRADING INFORMATION

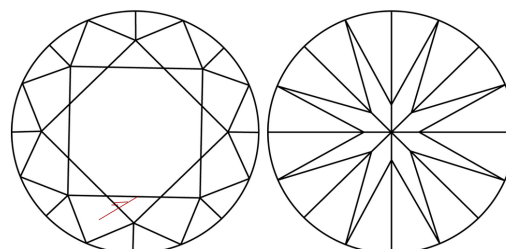
Polish **EXCELLENT**
Symmetry **EXCELLENT**
Fluorescence **NONE**
Inscription(s) **(IGI) 791648490**
Comments: IDEAL CUT ROUND BRILLIANT

PROPORTIONS



Sample Image Used

CLARITY CHARACTERISTICS



KEY TO SYMBOLS

Red symbols indicate internal characteristics.
Green symbols indicate external characteristics.

COLOR

D - F	G - J	K - M	N - R	S - Z	FANCY
Colorless	Near Colorless	Slightly Tinted	Very Light Color	Light Color	

CLARITY

FL	IF	VVS ¹⁻²	VS ¹⁻²	SI ¹⁻²	I ¹⁻³
Flawless	Internally Flawless	Very Very Slightly Included	Very Slightly Included	Slightly Included	Included

