



ELECTRONIC COPY

790688764
Report verification at igi.org



April 13, 2026
IGI Report Number **790688764**
Description **NATURAL DIAMOND**
Shape and Cutting Style **ROUND BRILLIANT**
Measurements **8.75 - 8.79 X 5.35 MM**

GRADING RESULTS

Carat Weight **2.51 CARATS**
Color Grade **I**
Clarity Grade **VS 2**
Cut Grade **EXCELLENT**

April 13, 2026
IGI Report Number **790688764**
Description **NATURAL DIAMOND**
Shape and Cutting Style **ROUND BRILLIANT**
Measurements **8.75 - 8.79 X 5.35 MM**

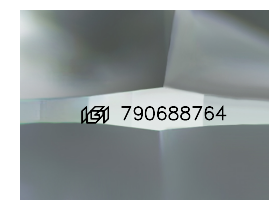
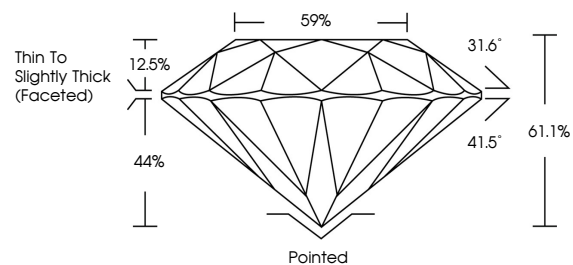
GRADING RESULTS

Carat Weight **2.51 CARATS**
Color Grade **I**
Clarity Grade **VS 2**
Cut Grade **EXCELLENT**

ADDITIONAL GRADING INFORMATION

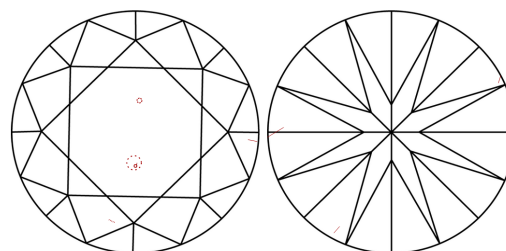
Polish **EXCELLENT**
Symmetry **EXCELLENT**
Fluorescence **NONE**
Inscription(s) **790688764**

PROPORTIONS



Sample Image Used

CLARITY CHARACTERISTICS



KEY TO SYMBOLS

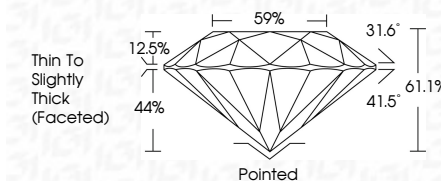
Red symbols indicate internal characteristics.
Green symbols indicate external characteristics.

COLOR

D - F	G - J	K - M	N - R	S - Z	FANCY
Colorless	Near Colorless	Slightly Tinted	Very Light Color	Light Color	

CLARITY

FL	IF	VVS 1-2	VS 1-2	SI 1-2	I 1-3
Flawless	Internally Flawless	Very Very Slightly Included	Very Slightly Included	Slightly Included	Included



ADDITIONAL GRADING INFORMATION

Polish **EXCELLENT**
Symmetry **EXCELLENT**
Fluorescence **NONE**
Inscription(s) **790688764**



IGI



April 13, 2026
IGI Report No 790688764
ROUND BRILLIANT
8.75 - 8.79 X 5.35 MM
2.51 CARATS
I
VS 2
EXCELLENT
61.1%
59%
Thin To Slightly Thick (Faceted)
Pointed
EXCELLENT
EXCELLENT
NONE
NONE
790688764