



DIAMOND REPORT

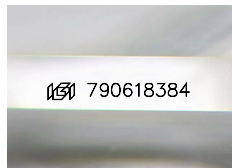
May 12, 2026
IGI Report Number **790618384**
Description **NATURAL DIAMOND**
Shape and Cutting Style **EMERALD CUT**
Measurements **5.41 X 3.77 X 2.56 MM**

GRADING RESULTS

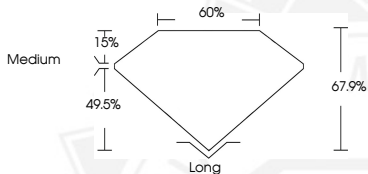
Carat Weight **0.51 CARAT**
Color Grade **I**
Clarity Grade **VVS 1**
Cut Grade **EXCELLENT**

ADDITIONAL GRADING INFORMATION

Polish **EXCELLENT**
Symmetry **EXCELLENT**
Fluorescence **SLIGHT**
Identification Features **PINPOINT**
Inscription(s) **IGI 790618384**



Sample Image Used



May 12, 2026

IGI Report Number **790618384**

EMERALD CUT

NATURAL DIAMOND

5.41 X 3.77 X 2.56 MM

Carat Weight **0.51 CARAT**
Color Grade **I**
Clarity Grade **VVS 1**
Cut Grade **EXCELLENT**
Polish **EXCELLENT**
Symmetry **EXCELLENT**
Fluorescence **SLIGHT**
Inscription(s) **IGI 790618384**



May 12, 2026

IGI Report Number **790618384**

EMERALD CUT

NATURAL DIAMOND

5.41 X 3.77 X 2.56 MM

Carat Weight **0.51 CARAT**
Color Grade **I**
Clarity Grade **VVS 1**
Cut Grade **EXCELLENT**
Polish **EXCELLENT**
Symmetry **EXCELLENT**
Fluorescence **SLIGHT**
Inscription(s) **IGI 790618384**



THIS DOCUMENT WAS PRODUCED WITH THE FOLLOWING SECURITY MEASURES: SPECIAL DOCUMENT PAPER, INK SCREENS, WATERMARK, BACKGROUND DESIGNS, HOLOGRAM AND OTHER SECURITY FEATURES NOT LISTED AND DO EXCEED DOCUMENT SECURITY INDUSTRY GUIDELINES.