



**INTERNATIONAL  
GEMOLOGICAL  
INSTITUTE**

**ELECTRONIC COPY**



April 17, 2026

IGI Report Number 790617975

CUT CORNERED RECTANGULAR

MODIFIED BRILLIANT

NATURAL DIAMOND

5.02 X 3.53 X 2.40 MM

Carat Weight 0.35 CARAT  
Color Grade H  
Clarity Grade VVS 1  
Cut Grade VERY GOOD  
Polish EXCELLENT  
Symmetry EXCELLENT  
Fluorescence VERY SLIGHT  
Inscription(s) (IGI) 790617975

**DIAMOND REPORT**

April 17, 2026

IGI Report Number

790617975

Description

NATURAL DIAMOND

Shape and Cutting Style

CUT CORNERED RECTANGULAR MODIFIED  
BRILLIANT

Measurements

5.02 X 3.53 X 2.40 MM

**GRADING RESULTS**

Carat Weight

0.35 CARAT

Color Grade

H

Clarity Grade

VVS 1

Cut Grade

VERY GOOD

**ADDITIONAL GRADING INFORMATION**

Polish

EXCELLENT

Symmetry

EXCELLENT

Fluorescence

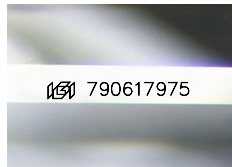
VERY SLIGHT

Identification Features

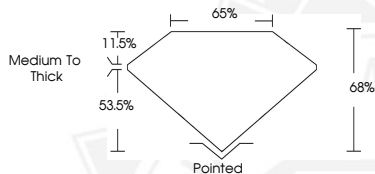
PINPOINT

Inscription(s)

(IGI) 790617975



Sample Image Used



April 17, 2026

IGI Report Number 790617975

CUT CORNERED RECTANGULAR

MODIFIED BRILLIANT

NATURAL DIAMOND

5.02 X 3.53 X 2.40 MM

Carat Weight 0.35 CARAT  
Color Grade H  
Clarity Grade VVS 1  
Cut Grade VERY GOOD  
Polish EXCELLENT  
Symmetry EXCELLENT  
Fluorescence VERY SLIGHT  
Inscription(s) (IGI) 790617975



THIS DOCUMENT WAS PRODUCED WITH THE FOLLOWING SECURITY MEASURES: SPECIAL DOCUMENT PAPER, INK SCREENS, WATERMARK, BACKGROUND DESIGNS, HOLOGRAM AND OTHER SECURITY FEATURES NOT LISTED AND DO EXCEED DOCUMENT SECURITY INDUSTRY GUIDELINES.

For terms & conditions and to verify this report, please visit [www.igi.org](http://www.igi.org)