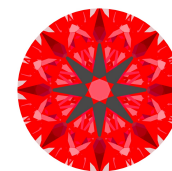
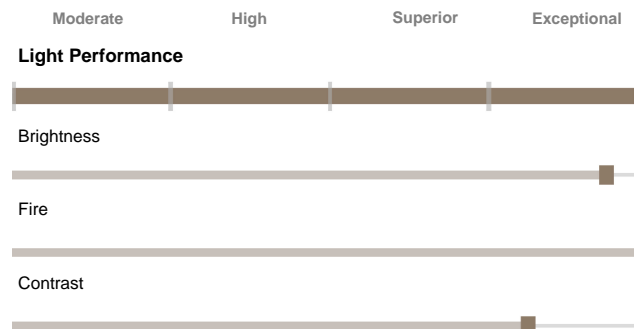




**Light Performance Grade: Exceptional**



**Structured Light Environment Representation**



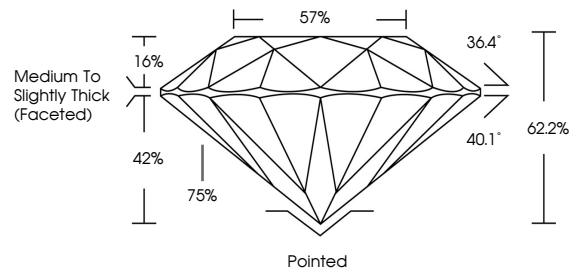
**COLOR**

| D - F     | G - J          | K - M           | N - R            | S - Z       | FANCY |
|-----------|----------------|-----------------|------------------|-------------|-------|
| Colorless | Near Colorless | Slightly Tinted | Very Light Color | Light Color |       |

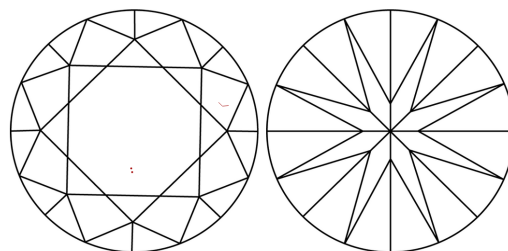
**CLARITY**

| FL       | IF                  | VVS 1-2                     | VS 1-2                 | SI 1-2            | I 1-3    |
|----------|---------------------|-----------------------------|------------------------|-------------------|----------|
| Flawless | Internally Flawless | Very Very Slightly Included | Very Slightly Included | Slightly Included | Included |

**PROPORTIONS**

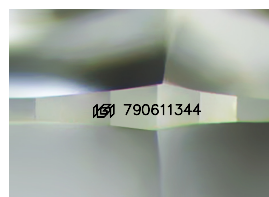


**CLARITY CHARACTERISTICS**



**KEY TO SYMBOLS**

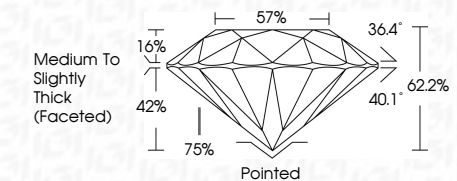
Red symbols indicate internal characteristics.  
Green symbols indicate external characteristics.



Sample Image Used



June 17, 2026  
IGI Report Number **790611344**  
Description **NATURAL DIAMOND**  
Shape and Cutting Style **ROUND BRILLIANT**  
Measurements **7.96 - 8.03 X 4.97 MM**  
**GRADING RESULTS**  
Carat Weight **2.01 CARATS**  
Color Grade **J**  
Clarity Grade **VVS 2**  
Cut Grade **EXCELLENT**



**ADDITIONAL GRADING INFORMATION**

Polish **EXCELLENT**  
Symmetry **EXCELLENT**  
Fluorescence **NONE**  
Inscription(s) **IGI 790611344**



**IGI**

June 17, 2026  
IGI Report No 790611344  
**ROUND BRILLIANT**  
7.96 - 8.03 X 4.97 MM  
Carat Weight **2.01 CARATS**  
Color Grade **J**  
Clarity Grade **VVS 2**  
Cut Grade **EXCELLENT**  
Depth **62.2%**  
Table **57%**  
Girdle **Medium To Slightly Thick (Faceted)**  
Culet **Pointed**  
Polish **EXCELLENT**  
Symmetry **EXCELLENT**  
Fluorescence **NONE**  
Inscription(s) **IGI 790611344**

