



ELECTRONIC COPY

790611296
Report verification at igi.org

DIAMOND REPORT

May 22, 2026
IGI Report Number **790611296**
Description **NATURAL DIAMOND**
Shape and Cutting Style **ROUND BRILLIANT**
Measurements **6.96 - 7.04 X 4.40 MM**

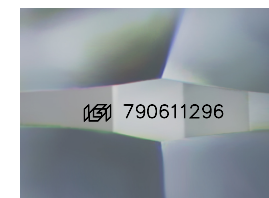
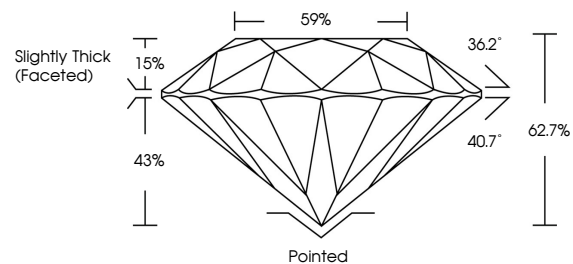
GRADING RESULTS

Carat Weight **1.37 CARAT**
Color Grade **J**
Clarity Grade **INTERNALLY FLAWLESS**
Cut Grade **EXCELLENT**

ADDITIONAL GRADING INFORMATION

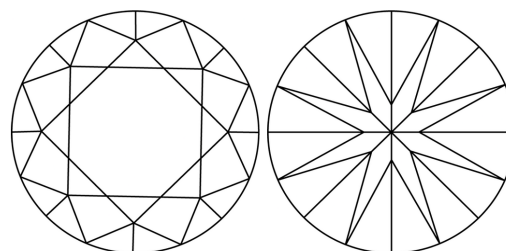
Polish **EXCELLENT**
Symmetry **EXCELLENT**
Fluorescence **VERY SLIGHT**
Inscription(s) **790611296**

PROPORTIONS



Sample Image Used

CLARITY CHARACTERISTICS



KEY TO SYMBOLS

Red symbols indicate internal characteristics.
Green symbols indicate external characteristics.

COLOR

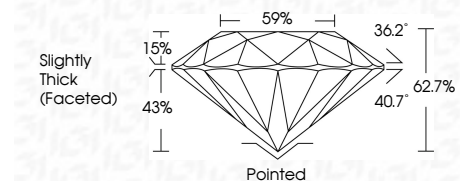
D - F	G - J	K - M	N - R	S - Z	FANCY
Colorless	Near Colorless	Slightly Tinted	Very Light Color	Light Color	

CLARITY

FL	IF	VVS ¹⁻²	VS ¹⁻²	SI ¹⁻²	I ¹⁻³
Flawless	Internally Flawless	Very Very Slightly Included	Very Slightly Included	Slightly Included	Included



May 22, 2026
IGI Report Number **790611296**
Description **NATURAL DIAMOND**
Shape and Cutting Style **ROUND BRILLIANT**
Measurements **6.96 - 7.04 X 4.40 MM**
GRADING RESULTS
Carat Weight **1.37 CARAT**
Color Grade **J**
Clarity Grade **INTERNALLY FLAWLESS**
Cut Grade **EXCELLENT**



ADDITIONAL GRADING INFORMATION

Polish **EXCELLENT**
Symmetry **EXCELLENT**
Fluorescence **VERY SLIGHT**
Inscription(s) **790611296**



IGI



May 22, 2026
IGI Report No 790611296
ROUND BRILLIANT
6.96 - 7.04 X 4.40 MM
1.37 CARAT
Color Grade **J**
Clarity Grade **IF**
Depth **EXCELLENT**
Table **62.7%**
Girdle **59%**
Slightly Thick (Faceted)
Culet **Pointed**
Polish **EXCELLENT**
Symmetry **EXCELLENT**
Fluorescence **VERY SLIGHT**
Inscriptions(s) **790611296**