



ELECTRONIC COPY

790611235
Report verification at igi.org

DIAMOND REPORT

May 8, 2026
IGI Report Number **790611235**
Description **NATURAL DIAMOND**
Shape and Cutting Style **EMERALD CUT**
Measurements **7.26 X 5.02 X 3.48 MM**

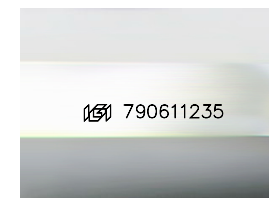
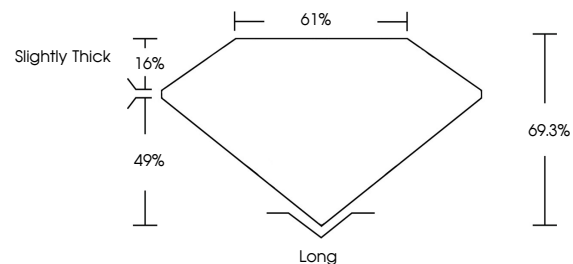
GRADING RESULTS

Carat Weight **1.25 CARAT**
Color Grade **H**
Clarity Grade **VVS 2**
Cut Grade **VERY GOOD**

ADDITIONAL GRADING INFORMATION

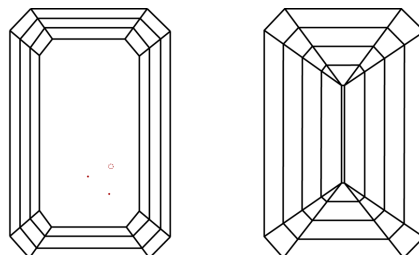
Polish **EXCELLENT**
Symmetry **EXCELLENT**
Fluorescence **STRONG**
Inscription(s) **790611235**

PROPORTIONS



Sample Image Used

CLARITY CHARACTERISTICS



KEY TO SYMBOLS

Red symbols indicate internal characteristics.
Green symbols indicate external characteristics.

COLOR

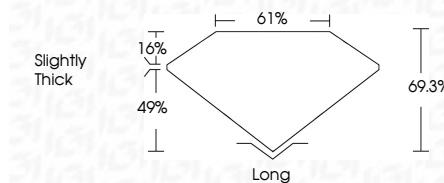
D - F	G - J	K - M	N - R	S - Z	FANCY
Colorless	Near Colorless	Slightly Tinted	Very Light Color	Light Color	

CLARITY

FL	IF	VVS ¹⁻²	VS ¹⁻²	SI ¹⁻²	I ¹⁻³
Flawless	Internally Flawless	Very Very Slightly Included	Very Slightly Included	Slightly Included	Included



May 8, 2026
IGI Report Number **790611235**
Description **NATURAL DIAMOND**
Shape and Cutting Style **EMERALD CUT**
Measurements **7.26 X 5.02 X 3.48 MM**
GRADING RESULTS
Carat Weight **1.25 CARAT**
Color Grade **H**
Clarity Grade **VVS 2**
Cut Grade **VERY GOOD**



ADDITIONAL GRADING INFORMATION

Polish **EXCELLENT**
Symmetry **EXCELLENT**
Fluorescence **STRONG**
Inscription(s) **790611235**



IGI



May 8, 2026
IGI Report No 790611235
EMERALD CUT
7.26 X 5.02 X 3.48 MM
Carat Weight **1.25 CARAT**
Color Grade **H**
Clarity Grade **VVS 2**
Cut Grade **VERY GOOD**
Depth **69.3%**
Table **61%**
Crown **1.6%**
Girdle **Slightly Thick**
Culet **Long**
Polish **EXCELLENT**
Symmetry **EXCELLENT**
Fluorescence **STRONG**
Inscription(s) **790611235**