



ELECTRONIC COPY

789604233
Report verification at igi.org



May 18, 2026

IGI Report Number **789604233**

Description **NATURAL DIAMOND**

Shape and Cutting Style **EMERALD CUT**

Measurements **6.98 X 5.05 X 3.52 MM**

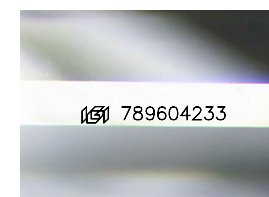
GRADING RESULTS

Carat Weight **1.20 CARAT**

Color Grade **H**

Clarity Grade **VS 1**

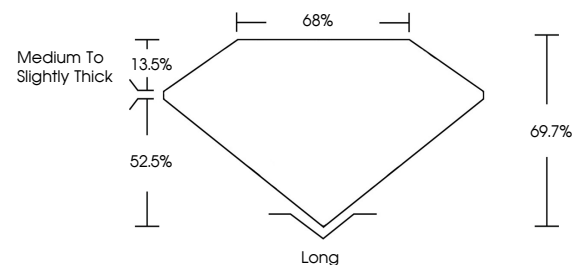
Cut Grade **VERY GOOD**



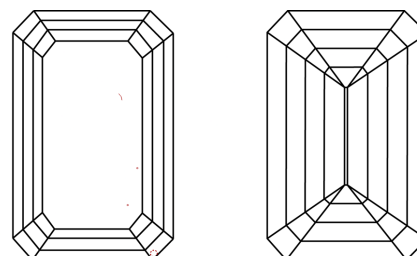
789604233

Sample Image Used

PROPORTIONS



CLARITY CHARACTERISTICS



KEY TO SYMBOLS

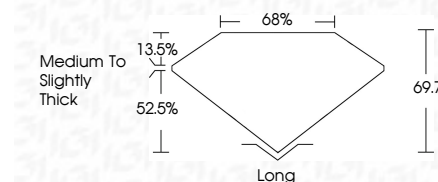
Red symbols indicate internal characteristics.
Green symbols indicate external characteristics.

COLOR

D - F	G - J	K - M	N - R	S - Z	FANCY
Colorless	Near Colorless	Slightly Tinted	Very Light Color	Light Color	

CLARITY

FL	IF	VVS ¹⁻²	VS ¹⁻²	SI ¹⁻²	I ¹⁻³
Flawless	Internally Flawless	Very Very Slightly Included	Very Slightly Included	Slightly Included	Included



ADDITIONAL GRADING INFORMATION

Polish **EXCELLENT**

Symmetry **EXCELLENT**

Fluorescence **NONE**

Inscription(s) **IGI 789604233**



IGI



May 18, 2026	1.20 CARAT	H	VS 1	68%	69.7%	Medium To Slightly Thick	Long	EXCELLENT	EXCELLENT	NONE	IGI 789604233
IGI Report No 789604233	6.98 X 5.05 X 3.52 MM	EMERALD CUT	VERY GOOD	68%	69.7%	Medium To Slightly Thick	Long	EXCELLENT	EXCELLENT	NONE	IGI 789604233
Carat Weight	Color Grade	Clarity Grade	Cut Grade	Table	Depth	Girdle	Culet	Polish	Symmetry	Fluorescence	Inscription(s)