



April 20, 2026

IGI Report Number 788655430

ROUND BRILLIANT

NATURAL DIAMOND

6.13 - 6.15 X 3.89 MM

Carat Weight 0.90 CARAT

Color Grade I

Clarity Grade VVS 1

Cut Grade EXCELLENT

Polish EXCELLENT

Symmetry EXCELLENT

Fluorescence NONE

Inscription(s) IGI 788655430

DIAMOND REPORT

April 20, 2026

IGI Report Number

788655430

Description

NATURAL DIAMOND

Shape and Cutting Style

ROUND BRILLIANT

Measurements

6.13 - 6.15 X 3.89 MM

GRADING RESULTS

Carat Weight

0.90 CARAT

Color Grade

I

Clarity Grade

VVS 1

Cut Grade

EXCELLENT

ADDITIONAL GRADING INFORMATION

Polish

EXCELLENT

Symmetry

EXCELLENT

Fluorescence

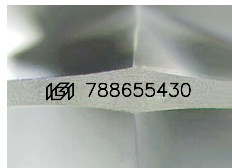
NONE

Identification Features

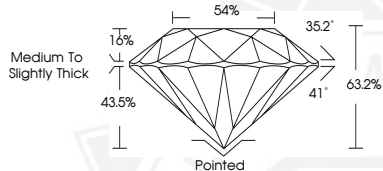
PINPOINT

Inscription(s)

IGI 788655430



Sample Image Used



April 20, 2026

IGI Report Number 788655430

ROUND BRILLIANT

NATURAL DIAMOND

6.13 - 6.15 X 3.89 MM

Carat Weight 0.90 CARAT

Color Grade I

Clarity Grade VVS 1

Cut Grade EXCELLENT

Polish EXCELLENT

Symmetry EXCELLENT

Fluorescence NONE

Inscription(s) IGI 788655430



THIS DOCUMENT WAS PRODUCED WITH THE FOLLOWING SECURITY MEASURES: SPECIAL DOCUMENT PAPER, INK SCREENS, WATERMARK, BACKGROUND DESIGNS, HOLOGRAM AND OTHER SECURITY FEATURES NOT LISTED AND DO EXCEED DOCUMENT SECURITY INDUSTRY GUIDELINES.