



DIAMOND REPORT

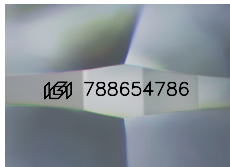
April 13, 2026
IGI Report Number **788654786**
Description **NATURAL DIAMOND**
Shape and Cutting Style **ROUND BRILLIANT**
Measurements **5.60 - 5.65 X 3.54 MM**

GRADING RESULTS

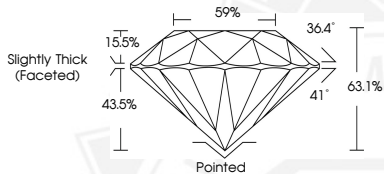
Carat Weight **0.70 CARAT**
Color Grade **I**
Clarity Grade **VVS 2**
Cut Grade **EXCELLENT**

ADDITIONAL GRADING INFORMATION

Polish **EXCELLENT**
Symmetry **EXCELLENT**
Fluorescence **NONE**
Identification Features **CLOUD, FEATHER**
Inscription(s) **IGI 788654786**



Sample Image Used



April 13, 2026
IGI Report Number **788654786**
ROUND BRILLIANT
NATURAL DIAMOND
5.60 - 5.65 X 3.54 MM
Carat Weight **0.70 CARAT**
Color Grade **I**
Clarity Grade **VVS 2**
Cut Grade **EXCELLENT**
Polish **EXCELLENT**
Symmetry **EXCELLENT**
Fluorescence **NONE**
Inscription(s) **IGI 788654786**



April 13, 2026
IGI Report Number **788654786**
ROUND BRILLIANT
NATURAL DIAMOND
5.60 - 5.65 X 3.54 MM
Carat Weight **0.70 CARAT**
Color Grade **I**
Clarity Grade **VVS 2**
Cut Grade **EXCELLENT**
Polish **EXCELLENT**
Symmetry **EXCELLENT**
Fluorescence **NONE**
Inscription(s) **IGI 788654786**



THIS DOCUMENT WAS PRODUCED WITH THE FOLLOWING SECURITY MEASURES: SPECIAL DOCUMENT PAPER, INK SCREENS, WATERMARK, BACKGROUND DESIGNS, HOLOGRAM AND OTHER SECURITY FEATURES NOT LISTED AND DO EXCEED DOCUMENT SECURITY INDUSTRY GUIDELINES.