



ELECTRONIC COPY

788644176
Report verification at igi.org



April 7, 2026
IGI Report Number **788644176**
Description **NATURAL DIAMOND**
Shape and Cutting Style **CUT CORNERED
RECTANGULAR MODIFIED
BRILLIANT**
Measurements **7.31 X 5.21 X 3.21 MM**
GRADING RESULTS
Carat Weight **1.11 CARAT**
Color Grade **J**
Clarity Grade **VS 1**
Cut Grade **VERY GOOD**

DIAMOND REPORT

April 7, 2026
IGI Report Number **788644176**
Description **NATURAL DIAMOND**
Shape and Cutting Style **CUT CORNERED RECTANGULAR
MODIFIED BRILLIANT**
Measurements **7.31 X 5.21 X 3.21 MM**

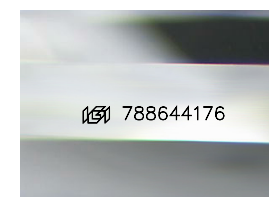
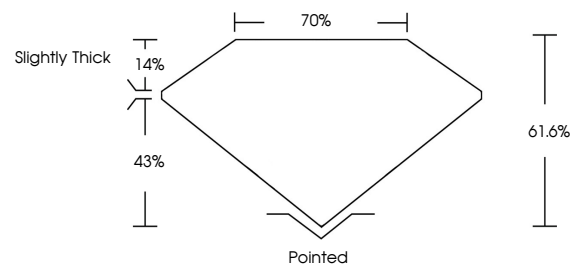
GRADING RESULTS

Carat Weight **1.11 CARAT**
Color Grade **J**
Clarity Grade **VS 1**
Cut Grade **VERY GOOD**

ADDITIONAL GRADING INFORMATION

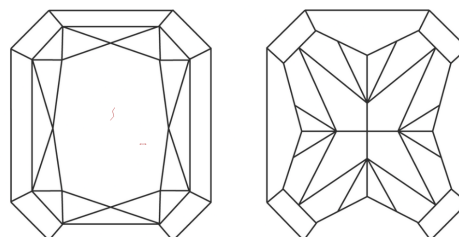
Polish **VERY GOOD**
Symmetry **VERY GOOD**
Fluorescence **SLIGHT**
Inscription(s) **788644176**

PROPORTIONS



Sample Image Used

CLARITY CHARACTERISTICS



KEY TO SYMBOLS

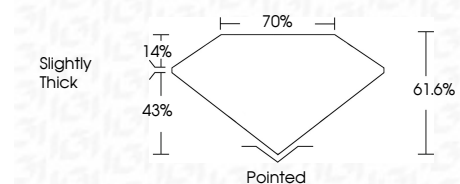
Red symbols indicate internal characteristics.
Green symbols indicate external characteristics.

COLOR

D - F	G - J	K - M	N - R	S - Z	FANCY
Colorless	Near Colorless	Slightly Tinted	Very Light Color	Light Color	

CLARITY

FL	IF	VVS ¹⁻²	VS ¹⁻²	SI ¹⁻²	I ¹⁻³
Flawless	Internally Flawless	Very Very Slightly Included	Very Slightly Included	Slightly Included	Included



ADDITIONAL GRADING INFORMATION

Polish **VERY GOOD**
Symmetry **VERY GOOD**
Fluorescence **SLIGHT**
Inscription(s) **788644176**



IGI



April 7, 2026
IGI Report No 788644176
CUT CORNERED RECT. MODIFIED BRILLIANT
7.31 X 5.21 X 3.21 MM
Carat Weight 1.11 CARAT
Color Grade J
Clarity Grade VS 1
Depth 61.6%
Table 70%
Girdle Slightly Thick
Culet Pointed
Polish VERY GOOD
Symmetry VERY GOOD
Fluorescence SLIGHT
Inscription(s) 788644176