



**ELECTRONIC COPY**

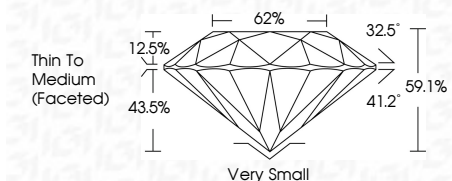
788631944  
Report verification at [igi.org](http://igi.org)



June 1, 2026  
IGI Report Number **788631944**  
Description **NATURAL DIAMOND**  
Shape and Cutting Style **ROUND BRILLIANT**  
Measurements **6.51 - 6.55 X 3.86 MM**

**GRADING RESULTS**

Carat Weight **1.00 CARAT**  
Color Grade **G**  
Clarity Grade **VVS 2**  
Cut Grade **EXCELLENT**



**ADDITIONAL GRADING INFORMATION**

Polish **EXCELLENT**  
Symmetry **EXCELLENT**  
Fluorescence **SLIGHT**  
Inscription(s) **IGI 788631944**



**IGI**

June 1, 2026  
IGI Report No. 788631944  
**ROUND BRILLIANT**  
6.51 - 6.55 X 3.86 MM  
1.00 CARAT  
G  
EXCELLENT  
VVS 2  
62%  
Thin To Medium (Faceted)  
Very Small  
EXCELLENT  
EXCELLENT  
SLIGHT  
IGI 788631944

**DIAMOND REPORT**

June 1, 2026  
IGI Report Number **788631944**  
Description **NATURAL DIAMOND**  
Shape and Cutting Style **ROUND BRILLIANT**  
Measurements **6.51 - 6.55 X 3.86 MM**

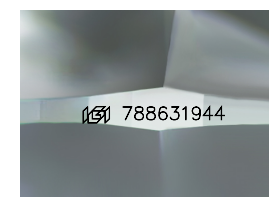
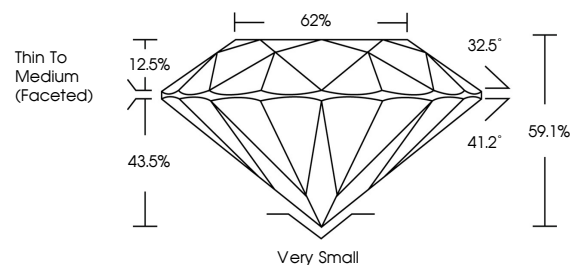
**GRADING RESULTS**

Carat Weight **1.00 CARAT**  
Color Grade **G**  
Clarity Grade **VVS 2**  
Cut Grade **EXCELLENT**

**ADDITIONAL GRADING INFORMATION**

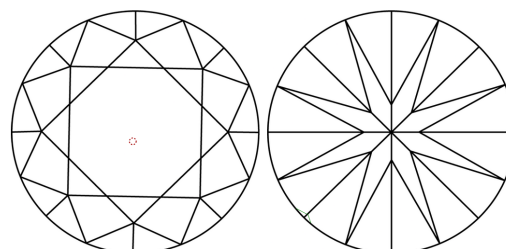
Polish **EXCELLENT**  
Symmetry **EXCELLENT**  
Fluorescence **SLIGHT**  
Inscription(s) **IGI 788631944**

**PROPORTIONS**



Sample Image Used

**CLARITY CHARACTERISTICS**



**KEY TO SYMBOLS**

Red symbols indicate internal characteristics.  
Green symbols indicate external characteristics.

**COLOR**

D - F	G - J	K - M	N - R	S - Z	FANCY
Colorless	Near Colorless	Slightly Tinted	Very Light Color	Light Color	

**CLARITY**

FL	IF	VVS 1-2	VS 1-2	SI 1-2	I 1-3
Flawless	Internally Flawless	Very Very Slightly Included	Very Slightly Included	Slightly Included	Included

