



ELECTRONIC COPY

788631851
Report verification at igi.org



May 25, 2026
IGI Report Number **788631851**
Description **NATURAL DIAMOND**
Shape and Cutting Style **ROUND BRILLIANT**
Measurements **6.26 - 6.31 X 3.99 MM**

GRADING RESULTS

Carat Weight **1.00 CARAT**
Color Grade **L**
Clarity Grade **VVS 1**
Cut Grade **EXCELLENT**

May 25, 2026
IGI Report Number **788631851**
Description **NATURAL DIAMOND**
Shape and Cutting Style **ROUND BRILLIANT**
Measurements **6.26 - 6.31 X 3.99 MM**

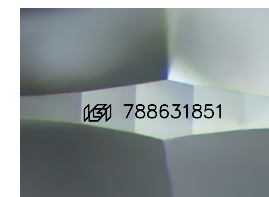
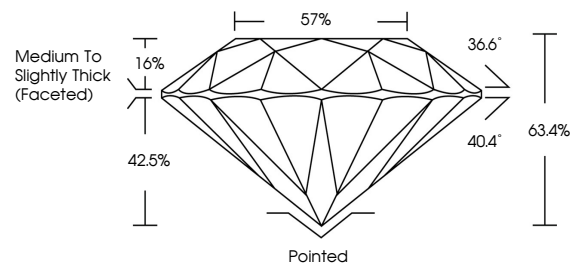
GRADING RESULTS

Carat Weight **1.00 CARAT**
Color Grade **L**
Clarity Grade **VVS 1**
Cut Grade **EXCELLENT**

ADDITIONAL GRADING INFORMATION

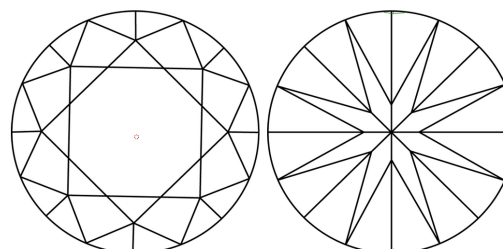
Polish **EXCELLENT**
Symmetry **EXCELLENT**
Fluorescence **VERY SLIGHT**
Inscription(s) **788631851**

PROPORTIONS



Sample Image Used

CLARITY CHARACTERISTICS



KEY TO SYMBOLS

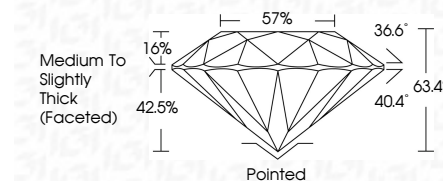
Red symbols indicate internal characteristics.
Green symbols indicate external characteristics.

COLOR

D - F	G - J	K - M	N - R	S - Z	FANCY
Colorless	Near Colorless	Slightly Tinted	Very Light Color	Light Color	

CLARITY

FL	IF	VVS 1-2	VS 1-2	SI 1-2	I 1-3
Flawless	Internally Flawless	Very Very Slightly Included	Very Slightly Included	Slightly Included	Included



ADDITIONAL GRADING INFORMATION

Polish **EXCELLENT**
Symmetry **EXCELLENT**
Fluorescence **VERY SLIGHT**
Inscription(s) **788631851**



IGI



May 25, 2026
IGI Report No 788631851
ROUND BRILLIANT
6.26 - 6.31 X 3.99 MM
1.00 CARAT L
Color Grade EXCELLENT
Clarity Grade VVS 1
Depth 63.4%
Table 57%
Girdle Medium To Slightly Thick (Faceted)
Culet Pointed
Polish EXCELLENT
Symmetry EXCELLENT
Fluorescence VERY SLIGHT
Inscriptions(s) 788631851