



**ELECTRONIC COPY**

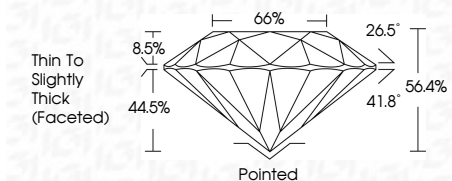
788631566  
Report verification at [igi.org](http://igi.org)



April 27, 2026  
IGI Report Number **788631566**  
Description **NATURAL DIAMOND**  
Shape and Cutting Style **ROUND BRILLIANT**  
Measurements **6.66 - 6.74 X 3.78 MM**

**GRADING RESULTS**

Carat Weight **1.00 CARAT**  
Color Grade **D**  
Clarity Grade **VVS 2**  
Cut Grade **GOOD**



**ADDITIONAL GRADING INFORMATION**

Polish **EXCELLENT**  
Symmetry **GOOD**  
Fluorescence **VERY SLIGHT**  
Inscription(s) **IGI 788631566**



**IGI**

April 27, 2026  
IGI Report No 788631566  
**ROUND BRILLIANT**  
6.66 - 6.74 X 3.78 MM  
1.00 CARAT  
D  
VVS 2  
GOOD  
66.4%  
66%  
Thin To Slightly Thick (Faceted)  
Pointed  
EXCELLENT  
GOOD  
VERY SLIGHT  
IGI 788631566

**DIAMOND REPORT**

April 27, 2026  
IGI Report Number **788631566**  
Description **NATURAL DIAMOND**  
Shape and Cutting Style **ROUND BRILLIANT**  
Measurements **6.66 - 6.74 X 3.78 MM**

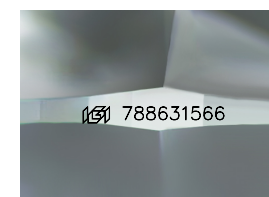
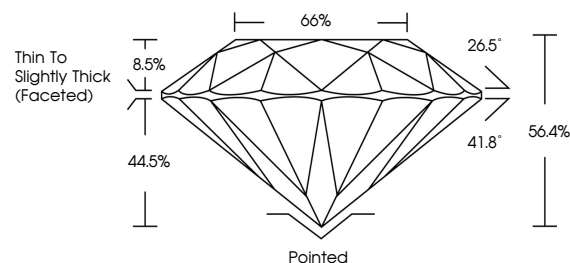
**GRADING RESULTS**

Carat Weight **1.00 CARAT**  
Color Grade **D**  
Clarity Grade **VVS 2**  
Cut Grade **GOOD**

**ADDITIONAL GRADING INFORMATION**

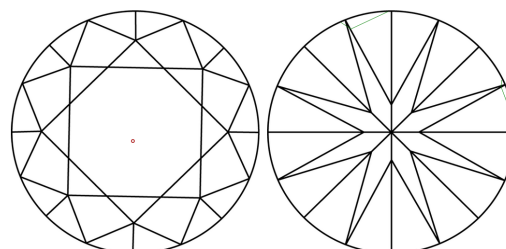
Polish **EXCELLENT**  
Symmetry **GOOD**  
Fluorescence **VERY SLIGHT**  
Inscription(s) **IGI 788631566**

**PROPORTIONS**



Sample Image Used

**CLARITY CHARACTERISTICS**



**KEY TO SYMBOLS**

Red symbols indicate internal characteristics.  
Green symbols indicate external characteristics.

**COLOR**

D - F	G - J	K - M	N - R	S - Z	FANCY
Colorless	Near Colorless	Slightly Tinted	Very Light Color	Light Color	

**CLARITY**

FL	IF	VVS 1-2	VS 1-2	SI 1-2	I 1-3
Flawless	Internally Flawless	Very Very Slightly Included	Very Slightly Included	Slightly Included	Included

