



ELECTRONIC COPY

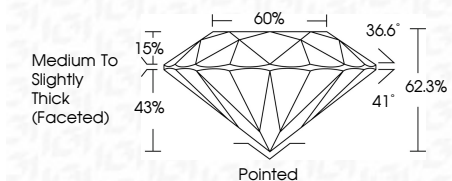
788631531
Report verification at igi.org



April 15, 2026
IGI Report Number **788631531**
Description **NATURAL DIAMOND**
Shape and Cutting Style **ROUND BRILLIANT**
Measurements **6.33 - 6.38 X 3.96 MM**

GRADING RESULTS

Carat Weight **1.00 CARAT**
Color Grade **I**
Clarity Grade **VS 2**
Cut Grade **EXCELLENT**



ADDITIONAL GRADING INFORMATION

Polish **EXCELLENT**
Symmetry **EXCELLENT**
Fluorescence **NONE**
Inscription(s) **IGI 788631531**



IGI

April 15, 2026
IGI Report No 788631531
ROUND BRILLIANT
Carat Weight **1.00 CARAT**
Color Grade **I**
Clarity Grade **VS 2**
Depth **EXCELLENT**
Table **62.3%**
Girdle **60%**
Medium To Slightly Thick (Faceted)
Culet **Pointed**
Polish **EXCELLENT**
Symmetry **EXCELLENT**
Fluorescence **NONE**
Inscriptions(s) **IGI 788631531**

DIAMOND REPORT

April 15, 2026
IGI Report Number **788631531**
Description **NATURAL DIAMOND**
Shape and Cutting Style **ROUND BRILLIANT**
Measurements **6.33 - 6.38 X 3.96 MM**

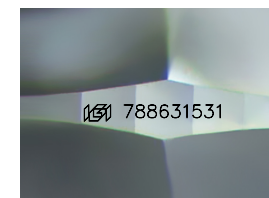
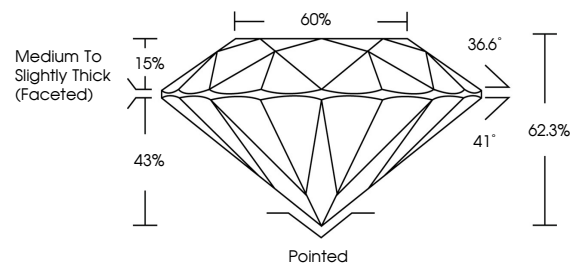
GRADING RESULTS

Carat Weight **1.00 CARAT**
Color Grade **I**
Clarity Grade **VS 2**
Cut Grade **EXCELLENT**

ADDITIONAL GRADING INFORMATION

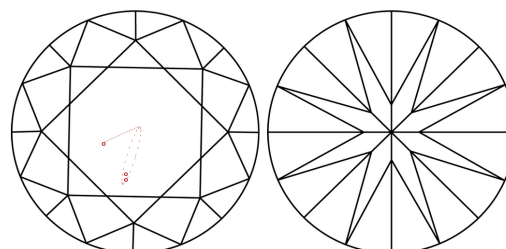
Polish **EXCELLENT**
Symmetry **EXCELLENT**
Fluorescence **NONE**
Inscription(s) **IGI 788631531**

PROPORTIONS



Sample Image Used

CLARITY CHARACTERISTICS



KEY TO SYMBOLS

Red symbols indicate internal characteristics.
Green symbols indicate external characteristics.

COLOR

D - F	G - J	K - M	N - R	S - Z	FANCY
Colorless	Near Colorless	Slightly Tinted	Very Light Color	Light Color	

CLARITY

FL	IF	VVS 1-2	VS 1-2	SI 1-2	I 1-3
Flawless	Internally Flawless	Very Very Slightly Included	Very Slightly Included	Slightly Included	Included

