



ELECTRONIC COPY

788608018
Report verification at igi.org

DIAMOND REPORT

May 19, 2026
IGI Report Number **788608018**
Description **NATURAL DIAMOND**
Shape and Cutting Style **CUSHION MODIFIED BRILLIANT**
Measurements **7.37 X 5.56 X 3.69 MM**

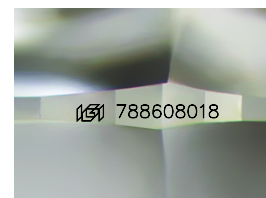
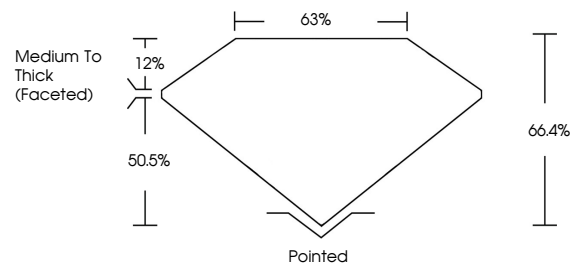
GRADING RESULTS

Carat Weight **1.20 CARAT**
Color Grade **J**
Clarity Grade **SI 2**
Cut Grade **VERY GOOD**

ADDITIONAL GRADING INFORMATION

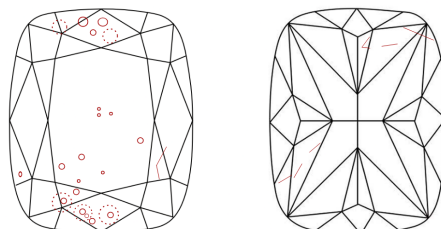
Polish **EXCELLENT**
Symmetry **EXCELLENT**
Fluorescence **VERY SLIGHT**
Inscription(s) **788608018**

PROPORTIONS



Sample Image Used

CLARITY CHARACTERISTICS



KEY TO SYMBOLS

Red symbols indicate internal characteristics.
Green symbols indicate external characteristics.

COLOR

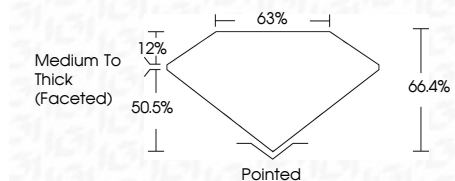
D - F	G - J	K - M	N - R	S - Z	FANCY
Colorless	Near Colorless	Slightly Tinted	Very Light Color	Light Color	

CLARITY

FL	IF	VVS ¹⁻²	VS ¹⁻²	SI ¹⁻²	I ¹⁻³
Flawless	Internally Flawless	Very Very Slightly Included	Very Slightly Included	Slightly Included	Included



May 19, 2026
IGI Report Number **788608018**
Description **NATURAL DIAMOND**
Shape and Cutting Style **CUSHION MODIFIED BRILLIANT**
Measurements **7.37 X 5.56 X 3.69 MM**
GRADING RESULTS
Carat Weight **1.20 CARAT**
Color Grade **J**
Clarity Grade **SI 2**
Cut Grade **VERY GOOD**



ADDITIONAL GRADING INFORMATION

Polish **EXCELLENT**
Symmetry **EXCELLENT**
Fluorescence **VERY SLIGHT**
Inscription(s) **788608018**



IGI



May 19, 2026
IGI Report No 788608018
CUSHION MODIFIED BRILLIANT
7.37 X 5.56 X 3.69 MM
Carat Weight **1.20 CARAT**
Color Grade **J**
Clarity Grade **SI 2**
Cut Grade **VERY GOOD**
Depth **66.4%**
Table **63%**
Girdle **Medium To Thick (Faceted)**
Culet **Pointed**
Polish **EXCELLENT**
Symmetry **EXCELLENT**
Fluorescence **VERY SLIGHT**
Inscriptions(s) **788608018**