



**ELECTRONIC COPY**

788607964  
Report verification at [igi.org](http://igi.org)

**DIAMOND REPORT**

May 14, 2026  
IGI Report Number **788607964**  
Description **NATURAL DIAMOND**  
Shape and Cutting Style **ROUND BRILLIANT**  
Measurements **7.18 - 7.23 X 4.58 MM**

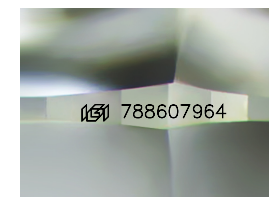
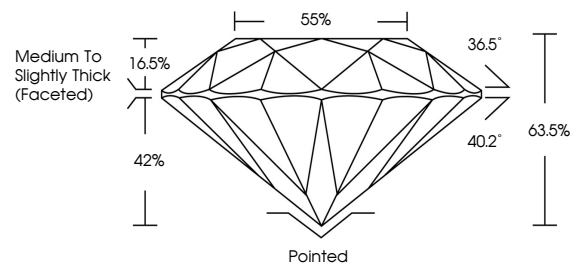
**GRADING RESULTS**

Carat Weight **1.50 CARAT**  
Color Grade **K**  
Clarity Grade **SI 1**  
Cut Grade **EXCELLENT**

**ADDITIONAL GRADING INFORMATION**

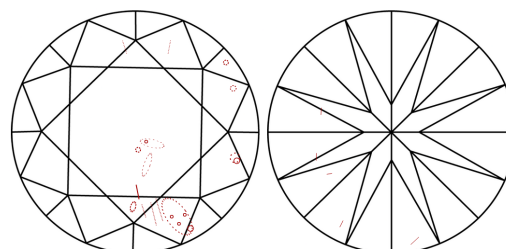
Polish **EXCELLENT**  
Symmetry **EXCELLENT**  
Fluorescence **NONE**  
Inscription(s) **788607964**

**PROPORTIONS**



Sample Image Used

**CLARITY CHARACTERISTICS**



**KEY TO SYMBOLS**

Red symbols indicate internal characteristics.  
Green symbols indicate external characteristics.

**COLOR**

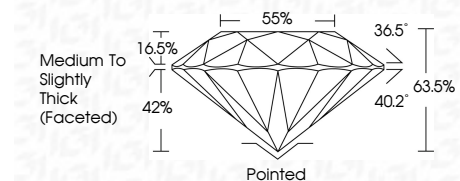
D - F	G - J	K - M	N - R	S - Z	FANCY
Colorless	Near Colorless	Slightly Tinted	Very Light Color	Light Color	

**CLARITY**

FL	IF	VVS <sup>1-2</sup>	VS <sup>1-2</sup>	SI <sup>1-2</sup>	I <sup>1-3</sup>
Flawless	Internally Flawless	Very Very Slightly Included	Very Slightly Included	Slightly Included	Included



May 14, 2026  
IGI Report Number **788607964**  
Description **NATURAL DIAMOND**  
Shape and Cutting Style **ROUND BRILLIANT**  
Measurements **7.18 - 7.23 X 4.58 MM**  
**GRADING RESULTS**  
Carat Weight **1.50 CARAT**  
Color Grade **K**  
Clarity Grade **SI 1**  
Cut Grade **EXCELLENT**



**ADDITIONAL GRADING INFORMATION**

Polish **EXCELLENT**  
Symmetry **EXCELLENT**  
Fluorescence **NONE**  
Inscription(s) **788607964**



**IGI**



May 14, 2026  
IGI Report No 788607964  
**ROUND BRILLIANT**  
7.18 - 7.23 X 4.58 MM  
1.50 CARAT  
K  
SI 1  
EXCELLENT  
63.5%  
85%  
Medium To Slightly Thick (Faceted)  
Pointed  
EXCELLENT  
EXCELLENT  
NONE  
788607964