



**ELECTRONIC COPY**

788607762  
Report verification at [igi.org](http://igi.org)



April 23, 2026

IGI Report Number **788607762**

Description **NATURAL DIAMOND**

Shape and Cutting Style **EMERALD CUT**

Measurements **7.16 X 4.98 X 3.37 MM**

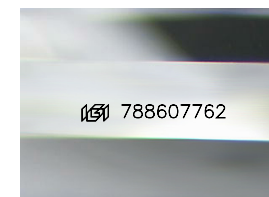
**GRADING RESULTS**

Carat Weight **1.20 CARAT**

Color Grade **I**

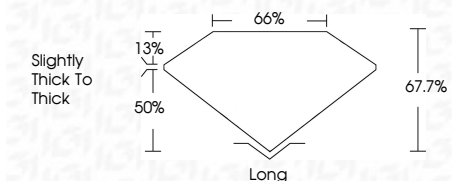
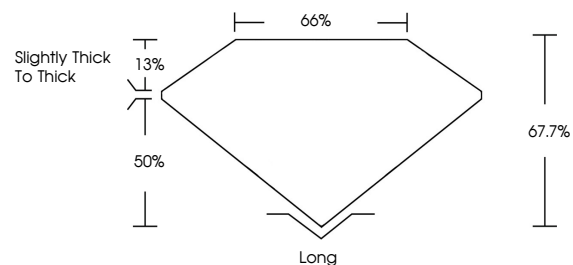
Clarity Grade **VS 2**

Cut Grade **VERY GOOD**

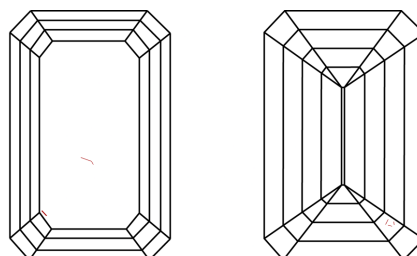


Sample Image Used

**PROPORTIONS**



**CLARITY CHARACTERISTICS**



**KEY TO SYMBOLS**

Red symbols indicate internal characteristics.  
Green symbols indicate external characteristics.

**COLOR**

D - F	G - J	K - M	N - R	S - Z	FANCY
Colorless	Near Colorless	Slightly Tinted	Very Light Color	Light Color	

**CLARITY**

FL	IF	VVS <sup>1-2</sup>	VS <sup>1-2</sup>	SI <sup>1-2</sup>	I <sup>1-3</sup>
Flawless	Internally Flawless	Very Very Slightly Included	Very Slightly Included	Slightly Included	Included

**ADDITIONAL GRADING INFORMATION**

Polish **EXCELLENT**

Symmetry **EXCELLENT**

Fluorescence **NONE**

Inscription(s) **IGI 788607762**

April 23, 2026  
IGI Report Number **788607762**  
Description **NATURAL DIAMOND**  
Shape and Cutting Style **EMERALD CUT**  
Measurements **7.16 X 4.98 X 3.37 MM**

**GRADING RESULTS**

Carat Weight **1.20 CARAT**

Color Grade **I**

Clarity Grade **VS 2**

Cut Grade **VERY GOOD**

**ADDITIONAL GRADING INFORMATION**

Polish **EXCELLENT**

Symmetry **EXCELLENT**

Fluorescence **NONE**

Inscription(s) **IGI 788607762**



**IGI**

April 23, 2026  
IGI Report No 788607762  
**EMERALD CUT**  
7.16 X 4.98 X 3.37 MM  
1.20 CARAT  
I  
VS 2  
VERY GOOD  
67.7%  
66%  
Slightly thick to thick  
Long  
EXCELLENT  
EXCELLENT  
NONE  
IGI 788607762