



**ELECTRONIC COPY**

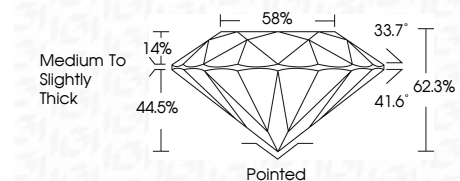
786621415  
Report verification at igi.org



March 31, 2026  
IGI Report Number **786621415**  
Description **NATURAL DIAMOND**  
Shape and Cutting Style **ROUND BRILLIANT**  
Measurements **10.13 - 10.15 X 6.32 MM**

**GRADING RESULTS**

Carat Weight **4.02 CARATS**  
Color Grade **L**  
Clarity Grade **SI 2**  
Cut Grade **EXCELLENT**



**ADDITIONAL GRADING INFORMATION**

Polish **EXCELLENT**  
Symmetry **EXCELLENT**  
Fluorescence **NONE**  
Inscription(s) **IGI 786621415**



**IGI**

March 31, 2026  
IGI Report No 786621415  
**ROUND BRILLIANT**  
10.13 - 10.15 X 6.32 MM  
4.02 CARATS  
L  
SI 2  
EXCELLENT  
62.3%  
58%  
Medium To Slightly Thick  
Pointed  
EXCELLENT  
EXCELLENT  
NONE  
IGI 786621415

**DIAMOND REPORT**

March 31, 2026  
IGI Report Number **786621415**  
Description **NATURAL DIAMOND**  
Shape and Cutting Style **ROUND BRILLIANT**  
Measurements **10.13 - 10.15 X 6.32 MM**

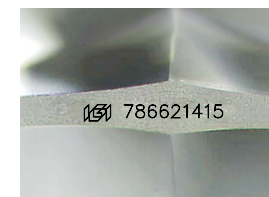
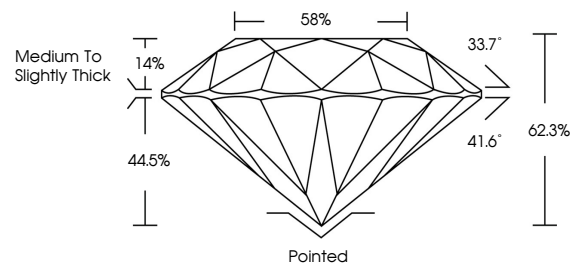
**GRADING RESULTS**

Carat Weight **4.02 CARATS**  
Color Grade **L**  
Clarity Grade **SI 2**  
Cut Grade **EXCELLENT**

**ADDITIONAL GRADING INFORMATION**

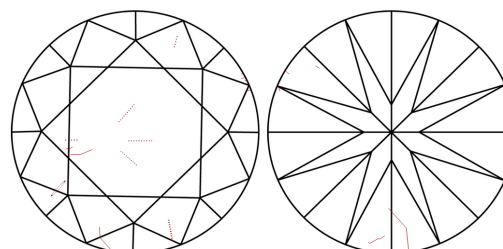
Polish **EXCELLENT**  
Symmetry **EXCELLENT**  
Fluorescence **NONE**  
Inscription(s) **IGI 786621415**

**PROPORTIONS**



Sample Image Used

**CLARITY CHARACTERISTICS**



**KEY TO SYMBOLS**

Red symbols indicate internal characteristics.  
Green symbols indicate external characteristics.

**COLOR**

D - F	G - J	K - M	N - R	S - Z	FANCY
Colorless	Near Colorless	Slightly Tinted	Very Light Color	Light Color	

**CLARITY**

FL	IF	VVS 1-2	VS 1-2	SI 1-2	I 1-3
Flawless	Internally Flawless	Very Very Slightly Included	Very Slightly Included	Slightly Included	Included

