



**DIAMOND REPORT**

April 7, 2026  
IGI Report Number **786612939**  
Description **NATURAL DIAMOND**  
Shape and Cutting Style **ROUND BRILLIANT**  
Measurements **5.60 - 5.64 X 3.53 MM**

**GRADING RESULTS**

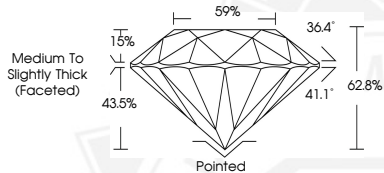
Carat Weight **0.70 CARAT**  
Color Grade **J**  
Clarity Grade **VS 2**  
Cut Grade **EXCELLENT**

**ADDITIONAL GRADING INFORMATION**

Polish **EXCELLENT**  
Symmetry **EXCELLENT**  
Fluorescence **NONE**  
Identification Features **CRYSTAL, FEATHER**  
Inscription(s) **IGI 786612939**



Sample Image Used



April 7, 2026  
IGI Report Number **786612939**  
**ROUND BRILLIANT**  
**NATURAL DIAMOND**  
**5.60 - 5.64 X 3.53 MM**  
Carat Weight **0.70 CARAT**  
Color Grade **J**  
Clarity Grade **VS 2**  
Cut Grade **EXCELLENT**  
Polish **EXCELLENT**  
Symmetry **EXCELLENT**  
Fluorescence **NONE**  
Inscription(s) **IGI 786612939**



April 7, 2026  
IGI Report Number **786612939**  
**ROUND BRILLIANT**  
**NATURAL DIAMOND**  
**5.60 - 5.64 X 3.53 MM**  
Carat Weight **0.70 CARAT**  
Color Grade **J**  
Clarity Grade **VS 2**  
Cut Grade **EXCELLENT**  
Polish **EXCELLENT**  
Symmetry **EXCELLENT**  
Fluorescence **NONE**  
Inscription(s) **IGI 786612939**



THIS DOCUMENT WAS PRODUCED WITH THE FOLLOWING SECURITY MEASURES: SPECIAL DOCUMENT PAPER, INK SCREENS, WATERMARK, BACKGROUND DESIGNS, HOLOGRAM AND OTHER SECURITY FEATURES NOT LISTED AND DO EXCEED DOCUMENT SECURITY INDUSTRY GUIDELINES.