



ELECTRONIC COPY

DIAMOND REPORT

March 26, 2026
IGI Report Number **784666599**
Description **NATURAL DIAMOND**
Shape and Cutting Style **CUT CORNERED RECTANGULAR MODIFIED BRILLIANT**
Measurements **11.05 X 8.52 X 5.99 MM**

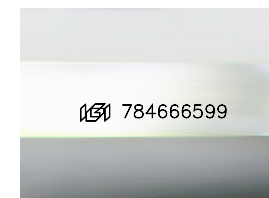
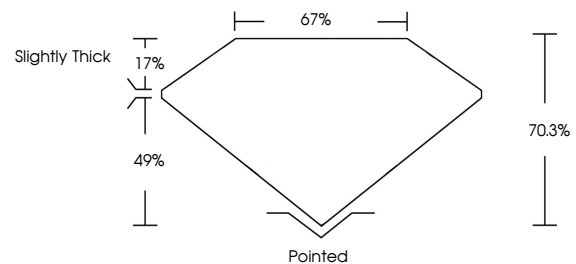
GRADING RESULTS

Carat Weight **5.01 CARATS**
Color Grade **H**
Clarity Grade **VS 2**
Cut Grade **VERY GOOD**

ADDITIONAL GRADING INFORMATION

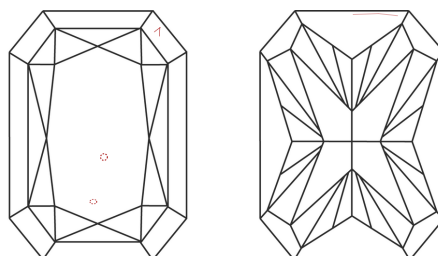
Polish **EXCELLENT**
Symmetry **EXCELLENT**
Fluorescence **VERY SLIGHT**
Inscription(s) **784666599**

PROPORTIONS



Sample Image Used

CLARITY CHARACTERISTICS



KEY TO SYMBOLS

Red symbols indicate internal characteristics.
Green symbols indicate external characteristics.

COLOR

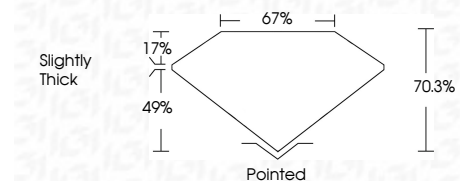
D - F	G - J	K - M	N - R	S - Z	FANCY
Colorless	Near Colorless	Slightly Tinted	Very Light Color	Light Color	

CLARITY

FL	IF	VVS ¹⁻²	VS ¹⁻²	SJ ¹⁻²	I ¹⁻³
Flawless	Internally Flawless	Very Very Slightly Included	Very Slightly Included	Slightly Included	Included



March 26, 2026
IGI Report Number **784666599**
Description **NATURAL DIAMOND**
Shape and Cutting Style **CUT CORNERED RECTANGULAR MODIFIED BRILLIANT**
Measurements **11.05 X 8.52 X 5.99 MM**
GRADING RESULTS
Carat Weight **5.01 CARATS**
Color Grade **H**
Clarity Grade **VS 2**
Cut Grade **VERY GOOD**



ADDITIONAL GRADING INFORMATION

Polish **EXCELLENT**
Symmetry **EXCELLENT**
Fluorescence **VERY SLIGHT**
Inscription(s) **784666599**



IGI



March 26, 2026
IGI Report No 784666599
CUT CORNERED RECT. MODIFIED BRILLIANT
5.01 CARATS
H
VS 2
VERY GOOD
70.3%
67%
Slightly Thick
Pointed
EXCELLENT
EXCELLENT
VERY SLIGHT
784666599