



ELECTRONIC COPY

783612593
Report verification at igi.org



April 7, 2026
IGI Report Number **783612593**
Description **NATURAL DIAMOND**
Shape and Cutting Style **EMERALD CUT**
Measurements **6.53 X 4.78 X 3.32 MM**
GRADING RESULTS
Carat Weight **1.01 CARAT**
Color Grade **H**
Clarity Grade **VVS 1**
Cut Grade **VERY GOOD**

DIAMOND REPORT

April 7, 2026
IGI Report Number **783612593**
Description **NATURAL DIAMOND**
Shape and Cutting Style **EMERALD CUT**
Measurements **6.53 X 4.78 X 3.32 MM**

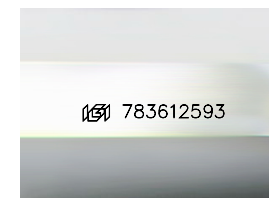
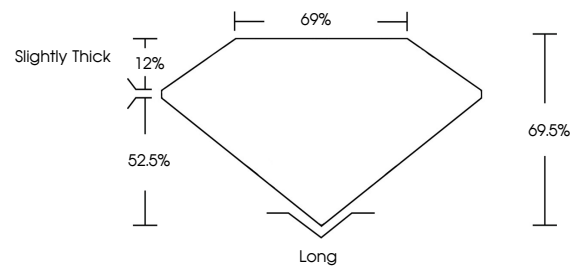
GRADING RESULTS

Carat Weight **1.01 CARAT**
Color Grade **H**
Clarity Grade **VVS 1**
Cut Grade **VERY GOOD**

ADDITIONAL GRADING INFORMATION

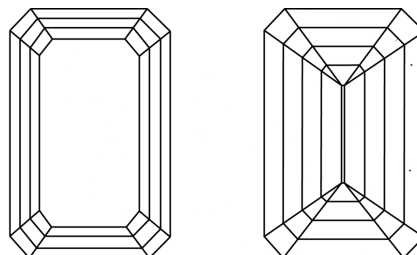
Polish **EXCELLENT**
Symmetry **EXCELLENT**
Fluorescence **NONE**
Inscription(s) **783612593**

PROPORTIONS



Sample Image Used

CLARITY CHARACTERISTICS



KEY TO SYMBOLS

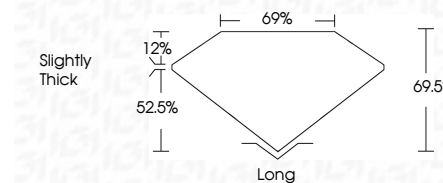
Red symbols indicate internal characteristics.
Green symbols indicate external characteristics.

COLOR

D - F	G - J	K - M	N - R	S - Z	FANCY
Colorless	Near Colorless	Slightly Tinted	Very Light Color	Light Color	

CLARITY

FL	IF	VVS 1-2	VS 1-2	SI 1-2	I 1-3
Flawless	Internally Flawless	Very Very Slightly Included	Very Slightly Included	Slightly Included	Included



ADDITIONAL GRADING INFORMATION

Polish **EXCELLENT**
Symmetry **EXCELLENT**
Fluorescence **NONE**
Inscription(s) **783612593**



IGI



April 7, 2026
IGI Report No. **783612593**
EMERALD CUT
6.53 X 4.78 X 3.32 MM
Carat Weight **1.01 CARAT**
Color Grade **H**
Clarity Grade **VVS 1**
Depth **VERY GOOD**
Table **69.5%**
Crown **69%**
Girdle **Slightly Thick**
Culet **Long**
Polish **EXCELLENT**
Symmetry **EXCELLENT**
Fluorescence **NONE**
Inscription(s) **783612593**