



**ELECTRONIC COPY**

783612571  
Report verification at [igi.org](http://igi.org)

**DIAMOND REPORT**

April 7, 2026  
IGI Report Number **783612571**  
Description **NATURAL DIAMOND**  
Shape and Cutting Style **SQUARE CUSHION MODIFIED BRILLIANT**  
Measurements **6.02 X 5.75 X 3.83 MM**

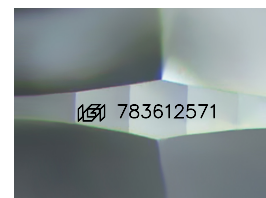
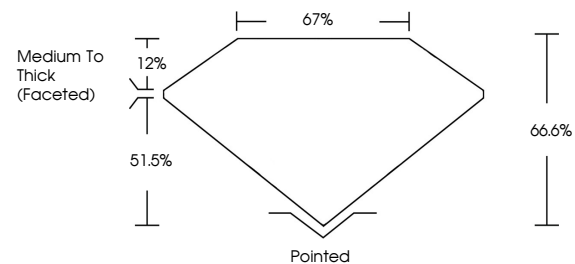
**GRADING RESULTS**

Carat Weight **1.01 CARAT**  
Color Grade **G**  
Clarity Grade **VS 2**  
Cut Grade **VERY GOOD**

**ADDITIONAL GRADING INFORMATION**

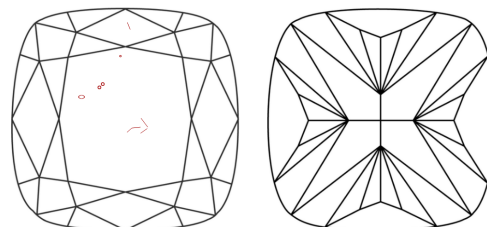
Polish **EXCELLENT**  
Symmetry **EXCELLENT**  
Fluorescence **VERY SLIGHT**  
Inscription(s) **783612571**

**PROPORTIONS**



Sample Image Used

**CLARITY CHARACTERISTICS**



**KEY TO SYMBOLS**

Red symbols indicate internal characteristics.  
Green symbols indicate external characteristics.

**COLOR**

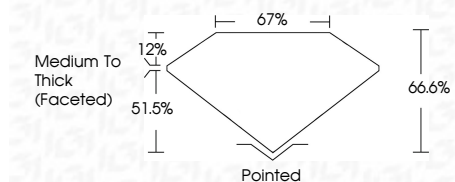
D - F	G - J	K - M	N - R	S - Z	FANCY
Colorless	Near Colorless	Slightly Tinted	Very Light Color	Light Color	

**CLARITY**

FL	IF	VVS <sup>1-2</sup>	VS <sup>1-2</sup>	SI <sup>1-2</sup>	I <sup>1-3</sup>
Flawless	Internally Flawless	Very Very Slightly Included	Very Slightly Included	Slightly Included	Included



April 7, 2026  
IGI Report Number **783612571**  
Description **NATURAL DIAMOND**  
Shape and Cutting Style **SQUARE CUSHION MODIFIED BRILLIANT**  
Measurements **6.02 X 5.75 X 3.83 MM**  
**GRADING RESULTS**  
Carat Weight **1.01 CARAT**  
Color Grade **G**  
Clarity Grade **VS 2**  
Cut Grade **VERY GOOD**



**ADDITIONAL GRADING INFORMATION**

Polish **EXCELLENT**  
Symmetry **EXCELLENT**  
Fluorescence **VERY SLIGHT**  
Inscription(s) **783612571**



**IGI**



April 7, 2026  
IGI Report No. 783612571  
**SQUARE CUSHION MODIFIED BRILLIANT**  
6.02 X 5.75 X 3.83 MM  
Carat Weight **1.01 CARAT**  
Color Grade **G**  
Clarity Grade **VS 2**  
Cut Grade **VERY GOOD**  
Depth **66.6%**  
Table **67%**  
Girdle **Medium To Thick (Faceted)**  
Culet **Pointed**  
Polish **EXCELLENT**  
Symmetry **EXCELLENT**  
Fluorescence **VERY SLIGHT**  
Inscription(s) **783612571**