



ELECTRONIC COPY

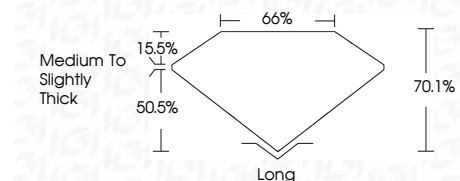
783612560
Report verification at igi.org



April 8, 2026
IGI Report Number **783612560**
Description **NATURAL DIAMOND**
Shape and Cutting Style **EMERALD CUT**
Measurements **7.42 X 5.35 X 3.75 MM**

GRADING RESULTS

Carat Weight **1.50 CARAT**
Color Grade **I**
Clarity Grade **VS 1**
Cut Grade **VERY GOOD**



ADDITIONAL GRADING INFORMATION

Polish **EXCELLENT**
Symmetry **EXCELLENT**
Fluorescence **NONE**
Inscription(s) **(IGI) 783612560**



IGI

April 8, 2026
IGI Report No 783612560
EMERALD CUT
7.42 X 5.35 X 3.75 MM
1.50 CARAT
Color Grade **I**
Clarity Grade **VS 1**
Cut Grade **VERY GOOD**
Depth **70.1%**
Table **66%**
Girdle **Medium To Slightly Thick**
Culet **Long**
Polish **EXCELLENT**
Symmetry **EXCELLENT**
Fluorescence **NONE**
Inscriptions(s) **(IGI) 783612560**

DIAMOND REPORT

April 8, 2026
IGI Report Number **783612560**
Description **NATURAL DIAMOND**
Shape and Cutting Style **EMERALD CUT**
Measurements **7.42 X 5.35 X 3.75 MM**

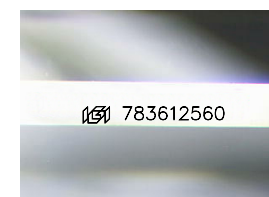
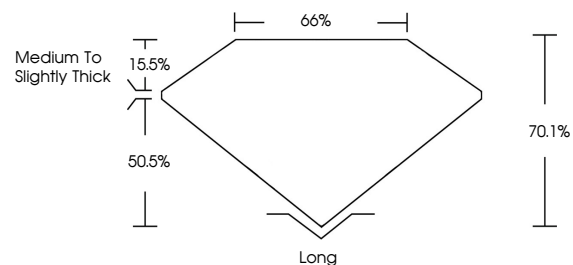
GRADING RESULTS

Carat Weight **1.50 CARAT**
Color Grade **I**
Clarity Grade **VS 1**
Cut Grade **VERY GOOD**

ADDITIONAL GRADING INFORMATION

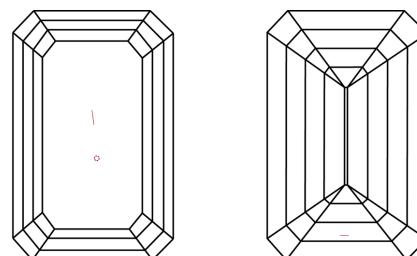
Polish **EXCELLENT**
Symmetry **EXCELLENT**
Fluorescence **NONE**
Inscription(s) **(IGI) 783612560**

PROPORTIONS



Sample Image Used

CLARITY CHARACTERISTICS



KEY TO SYMBOLS

Red symbols indicate internal characteristics.
Green symbols indicate external characteristics.

COLOR

D - F	G - J	K - M	N - R	S - Z	FANCY
Colorless	Near Colorless	Slightly Tinted	Very Light Color	Light Color	

CLARITY

FL	IF	VVS 1-2	VS 1-2	SI 1-2	I 1-3
Flawless	Internally Flawless	Very Very Slightly Included	Very Slightly Included	Slightly Included	Included

