



**ELECTRONIC COPY**

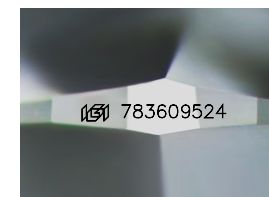
783609524  
Report verification at [igi.org](http://igi.org)



March 28, 2026  
IGI Report Number **783609524**  
Description **NATURAL DIAMOND**  
Shape and Cutting Style **ROUND BRILLIANT**  
Measurements **6.14 - 6.24 X 3.97 MM**

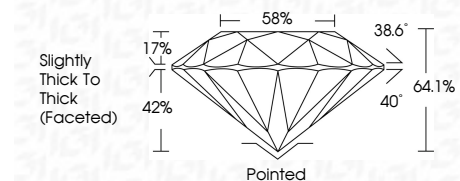
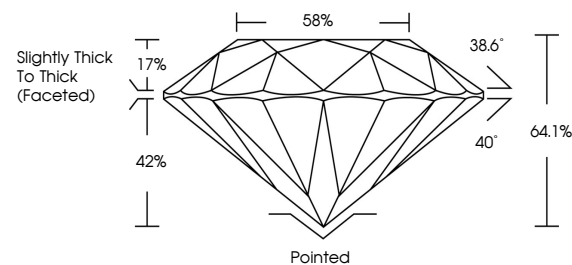
**GRADING RESULTS**

Carat Weight **1.00 CARAT**  
Color Grade **G**  
Clarity Grade **VS 2**  
Cut Grade **VERY GOOD**

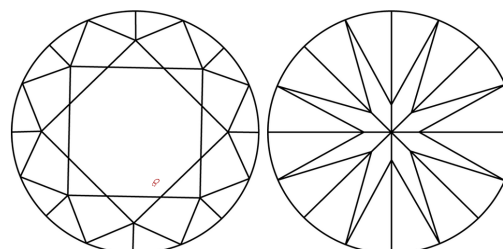


Sample Image Used

**PROPORTIONS**



**CLARITY CHARACTERISTICS**



**KEY TO SYMBOLS**

Red symbols indicate internal characteristics.  
Green symbols indicate external characteristics.

**COLOR**

D - F	G - J	K - M	N - R	S - Z	FANCY
Colorless	Near Colorless	Slightly Tinted	Very Light Color	Light Color	

**CLARITY**

FL	IF	VVS <sup>1-2</sup>	VS <sup>1-2</sup>	SI <sup>1-2</sup>	I <sup>1-3</sup>
Flawless	Internally Flawless	Very Very Slightly Included	Very Slightly Included	Slightly Included	Included

**ADDITIONAL GRADING INFORMATION**

Polish **EXCELLENT**  
Symmetry **VERY GOOD**  
Fluorescence **VERY SLIGHT**  
Inscription(s) **IGI 783609524**

March 28, 2026  
IGI Report Number **783609524**  
Description **NATURAL DIAMOND**  
Shape and Cutting Style **ROUND BRILLIANT**  
Measurements **6.14 - 6.24 X 3.97 MM**

**GRADING RESULTS**

Carat Weight **1.00 CARAT**  
Color Grade **G**  
Clarity Grade **VS 2**  
Cut Grade **VERY GOOD**

**ADDITIONAL GRADING INFORMATION**

Polish **EXCELLENT**  
Symmetry **VERY GOOD**  
Fluorescence **VERY SLIGHT**  
Inscription(s) **IGI 783609524**



**IGI**



March 28, 2026  
IGI Report No 783609524  
**ROUND BRILLIANT**  
6.14 - 6.24 X 3.97 MM  
Carat Weight **1.00 CARAT**  
Color Grade **G**  
Clarity Grade **VS 2**  
Cut Grade **VERY GOOD**  
Depth **64.1%**  
Table **58%**  
Girdle **Slightly Thick To Thick (Faceted)**  
Culet **Pointed**  
Polish **EXCELLENT**  
Symmetry **VERY GOOD**  
Fluorescence **VERY SLIGHT**  
Inscriptions(s) **IGI 783609524**