



**ELECTRONIC COPY**

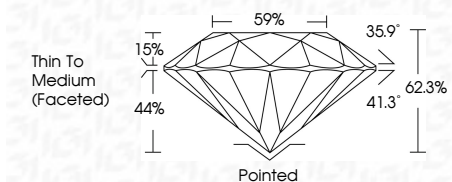
783607185  
Report verification at [igi.org](http://igi.org)



March 24, 2026  
IGI Report Number **783607185**  
Description **NATURAL DIAMOND**  
Shape and Cutting Style **ROUND BRILLIANT**  
Measurements **8.08 - 8.12 X 5.05 MM**

**GRADING RESULTS**

Carat Weight **2.03 CARATS**  
Color Grade **I**  
Clarity Grade **SI 1**  
Cut Grade **EXCELLENT**



**ADDITIONAL GRADING INFORMATION**

Polish **EXCELLENT**  
Symmetry **EXCELLENT**  
Fluorescence **NONE**  
Inscription(s) **IGI 783607185**  
Comments: IDEAL CUT ROUND BRILLIANT



**IGI**

March 24, 2026  
IGI Report No 783607185  
**ROUND BRILLIANT**  
8.08 - 8.12 X 5.05 MM  
2.03 CARATS  
Color Grade **I**  
Clarity Grade **SI 1**  
Depth **EXCELLENT**  
Table **62.3%**  
Girdle **EXCELLENT**  
Culet **59%**  
Polish **EXCELLENT**  
Symmetry **EXCELLENT**  
Fluorescence **NONE**  
Inscription(s) **IGI 783607185**

Comments: IDEAL CUT ROUND BRILLIANT

**DIAMOND REPORT**

March 24, 2026  
IGI Report Number **783607185**  
Description **NATURAL DIAMOND**  
Shape and Cutting Style **ROUND BRILLIANT**  
Measurements **8.08 - 8.12 X 5.05 MM**

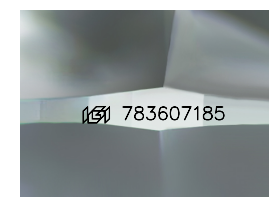
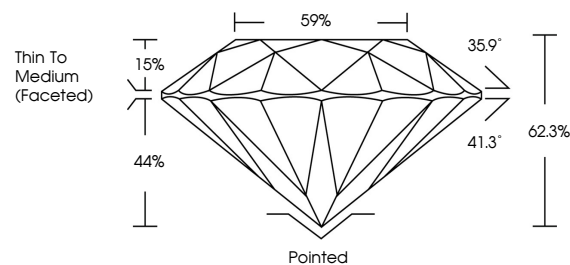
**GRADING RESULTS**

Carat Weight **2.03 CARATS**  
Color Grade **I**  
Clarity Grade **SI 1**  
Cut Grade **EXCELLENT**

**ADDITIONAL GRADING INFORMATION**

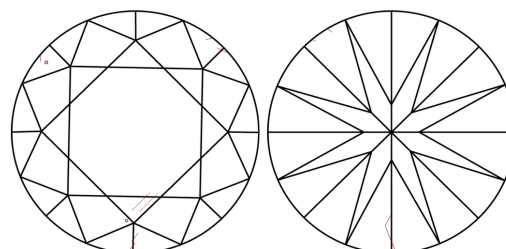
Polish **EXCELLENT**  
Symmetry **EXCELLENT**  
Fluorescence **NONE**  
Inscription(s) **IGI 783607185**  
Comments: IDEAL CUT ROUND BRILLIANT

**PROPORTIONS**



Sample Image Used

**CLARITY CHARACTERISTICS**



**KEY TO SYMBOLS**

Red symbols indicate internal characteristics.  
Green symbols indicate external characteristics.

**COLOR**

D - F	G - J	K - M	N - R	S - Z	FANCY
Colorless	Near Colorless	Slightly Tinted	Very Light Color	Light Color	

**CLARITY**

FL	IF	VVS <sup>1-2</sup>	VS <sup>1-2</sup>	SI <sup>1-2</sup>	I <sup>1-3</sup>
Flawless	Internally Flawless	Very Very Slightly Included	Very Slightly Included	Slightly Included	Included

