



ELECTRONIC COPY

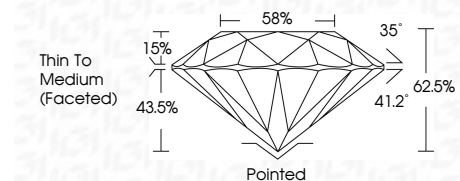
783607176
Report verification at igi.org



March 24, 2026
IGI Report Number **783607176**
Description **NATURAL DIAMOND**
Shape and Cutting Style **ROUND BRILLIANT**
Measurements **6.78 - 6.81 X 4.24 MM**

GRADING RESULTS

Carat Weight **1.21 CARAT**
Color Grade **K**
Clarity Grade **VS 2**
Cut Grade **EXCELLENT**



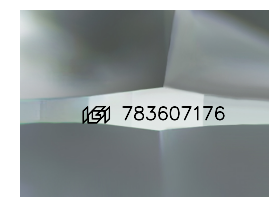
ADDITIONAL GRADING INFORMATION

Polish **EXCELLENT**
Symmetry **EXCELLENT**
Fluorescence **NONE**
Inscription(s) **IGI 783607176**
Comments: IDEAL CUT ROUND BRILLIANT



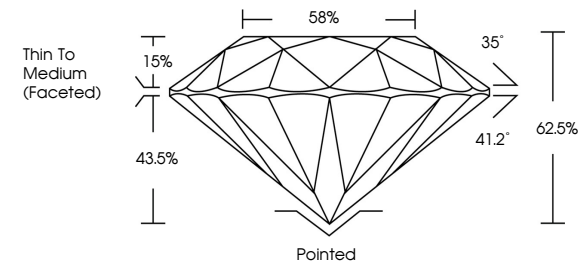
IGI

March 24, 2026
IGI Report No 783607176
ROUND BRILLIANT
6.78 - 6.81 X 4.24 MM
Carat Weight **1.21 CARAT**
Color Grade **K**
Clarity Grade **VS 2**
Depth **EXCELLENT**
Table **62.5%**
Girdle **58%**
Thin To Medium (Faceted)
Culet **Pointed**
Polish **EXCELLENT**
Symmetry **EXCELLENT**
Fluorescence **NONE**
Inscriptions(s) **IGI 783607176**
Comments: **IDEAL CUT ROUND BRILLIANT**

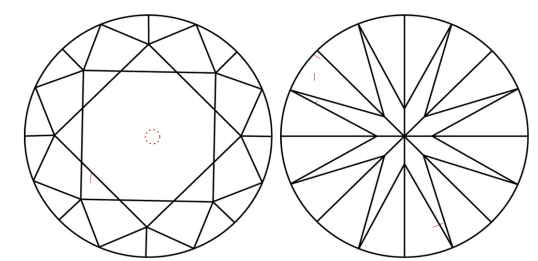


Sample Image Used

PROPORTIONS



CLARITY CHARACTERISTICS



KEY TO SYMBOLS

Red symbols indicate internal characteristics.
Green symbols indicate external characteristics.

COLOR

D - F	G - J	K - M	N - R	S - Z	FANCY
Colorless	Near Colorless	Slightly Tinted	Very Light Color	Light Color	

CLARITY

FL	IF	VVS 1-2	VS 1-2	SI 1-2	I 1-3
Flawless	Internally Flawless	Very Very Slightly Included	Very Slightly Included	Slightly Included	Included

