



ELECTRONIC COPY

782676337
Report verification at igi.org



June 15, 2026

IGI Report Number **782676337**

Description **NATURAL DIAMOND**

Shape and Cutting Style **EMERALD CUT**

Measurements **7.57 X 5.32 X 3.69 MM**

GRADING RESULTS

Carat Weight **1.52 CARAT**

Color Grade **H**

Clarity Grade **VVS 2**

Cut Grade **VERY GOOD**

DIAMOND REPORT

June 15, 2026

IGI Report Number **782676337**

Description **NATURAL DIAMOND**

Shape and Cutting Style **EMERALD CUT**

Measurements **7.57 X 5.32 X 3.69 MM**

GRADING RESULTS

Carat Weight **1.52 CARAT**

Color Grade **H**

Clarity Grade **VVS 2**

Cut Grade **VERY GOOD**

ADDITIONAL GRADING INFORMATION

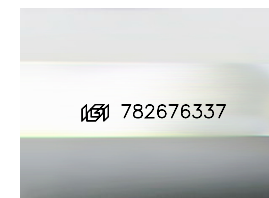
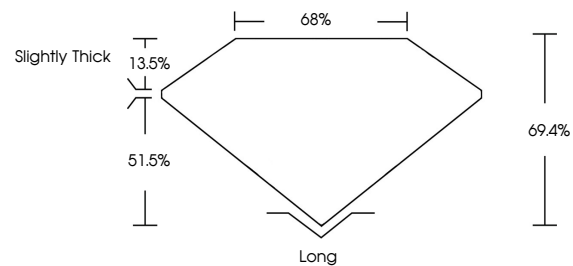
Polish **EXCELLENT**

Symmetry **EXCELLENT**

Fluorescence **NONE**

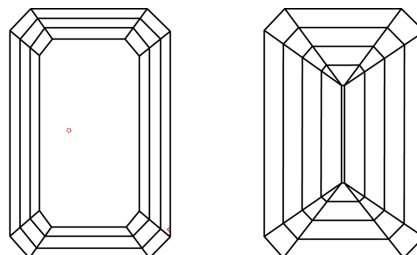
Inscription(s) **782676337**

PROPORTIONS



Sample Image Used

CLARITY CHARACTERISTICS



KEY TO SYMBOLS

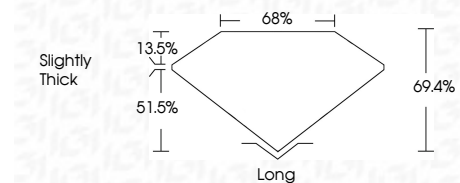
Red symbols indicate internal characteristics.
Green symbols indicate external characteristics.

COLOR

D - F	G - J	K - M	N - R	S - Z	FANCY
Colorless	Near Colorless	Slightly Tinted	Very Light Color	Light Color	

CLARITY

FL	IF	VVS ¹⁻²	VS ¹⁻²	SI ¹⁻²	I ¹⁻³
Flawless	Internally Flawless	Very Very Slightly Included	Very Slightly Included	Slightly Included	Included



ADDITIONAL GRADING INFORMATION

Polish **EXCELLENT**

Symmetry **EXCELLENT**

Fluorescence **NONE**

Inscription(s) **782676337**



IGI



June 15, 2026	1.52 CARAT	H	VVS 2	68%	69.4%	Long
IGI Report No 782676337	7.57 X 5.32 X 3.69 MM	EMERALD CUT	VERY GOOD	Slightly Thick	EXCELLENT	EXCELLENT
Carat Weight	Color Grade	Clarity Grade	Cut Grade	Table	Depth	Grille
Polish	Symmetry	Fluorescence	Inscription(s)			